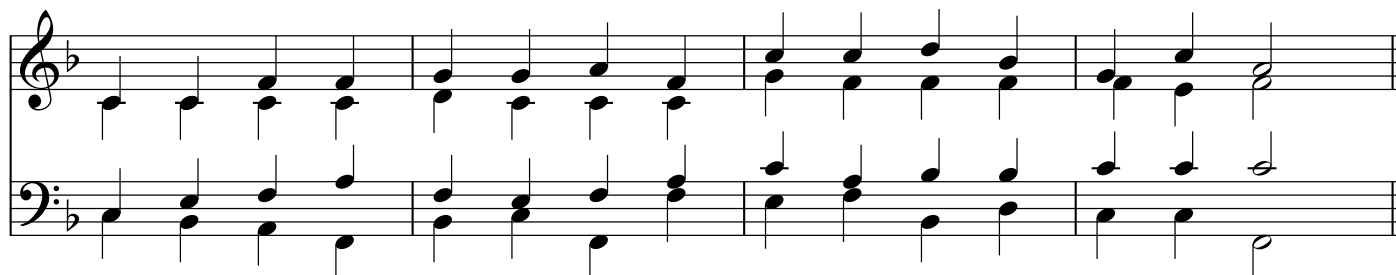


339 • Bethlehem, Of Noblest Cities

Tune: STUTTGART (87 87) Text: O Sola Magnarum Urbium

1. Beth - le - hem, of nobl - est cit - ies none can once with thee com - pare;
2. Fair - er than the sun at morn - ing was the star that told his birth;
3. By its lam - bent beau - ty guid - ed see the east - ern kings ap - pear;
4. Sol - emn things of mys - tic mean - ing: in - cense doth the God dis - close,
5. Ho - ly Je - sus, in thy bright - ness to the Gen - tile world dis - played,



thou a - lone the Lord from heav - en didst for us in - car - nate bear.
to the lands their God an - nounc ing, seen in flesh - ly form on earth.
see them bend, their gifts to of - fer, gifts of in - cense, gold and myrrh.
gold a roy - al child pro - claim - eth, myrrh a fu - ture tomb fore shows.
with the Fa - ther and the Spir - it end - less praise to thee be paid.

