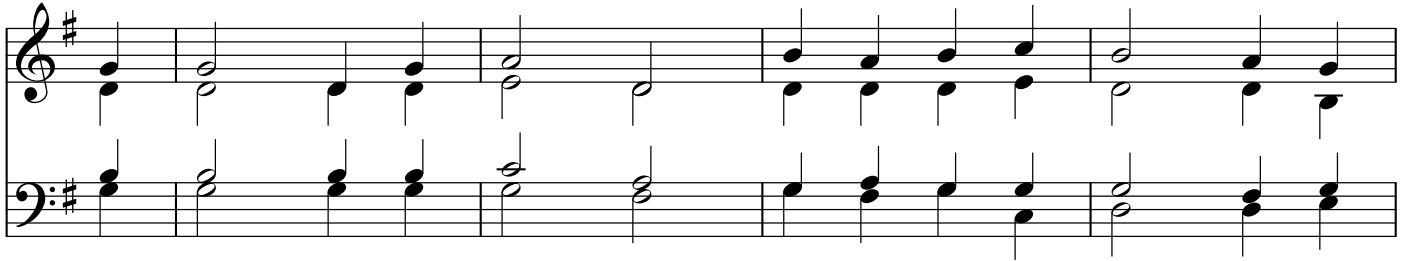


231 • O Come, All Ye Faithful

Tune: ADESTE FIDELES Text: John Francis Wade (†1786)

1. O come, all ye faithful, joy - ful and tri - um - phant, O
2. True God of true God, Light from Light E - ter - nal,
3. Sing, choirs of an - gels, sing in ex - ul - ta - tion; O
4. Yea, Lord, we greet Thee, born this hap - py morn - ing,
5. *Ad - é - ste fí - dé - les, lae - ti tri - um - phán - tes, Ve -*
6. *De - um de De - o, lu - men de lú - mi ne*



come ye, O come— ye, to Beth - le - hem.
 Lo, He ab - hors— not the Vir - gin's womb;
 sing, all ye cit - i - zens of heav - en a - bove!
 Je - sus, to Thee— be— glo - ry giv'n;
ní - te, ve - ní - te in Béth - le - hem.
Ge - stant pu - él - lae— ví - sce - ra.



Come and be - hold Him,— born the King of an - gels;
 Son of the Fa - ther, be - got - ten, not cre - at - ed;
 Glo - ry to God, all— glo - ry in the high - est;
 Word of the Fa - ther,— now in flesh ap - pear - ing.
Na - tum vi - dé - te Re - gem an - ge - ló - rum.
De - um— ve - rum, gé - ni - tum non fa - ctum.

