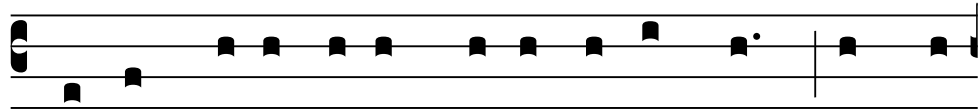


GRADUAL & ALLELUIA • Nuptial Mass (Ps 127: 3) Your wife shall be like the fruitful vine on the walls of your house. Vs. Your children around your table like the olive shoots. ALLELUIA, ALLELUIA. (Ps 19: 3) Vs. May the Lord send you help from his holy place: and watch over you from Sion. ALLELUIA. *FSSP in Los Angeles • <http://fssp.la> Possible Starting Pitch = F*

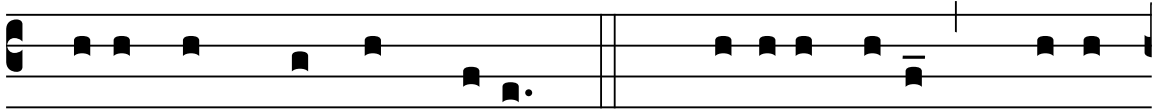
MODE VIII

U



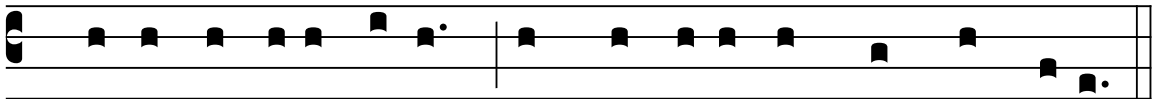
-xor tu-a sicut vi-tis abúndans in la-

The-wife of-thee like a-vine fruitful on



téri-bus domus tuae. Vs. Fíli-i tu-i sicut

the-sides of-the-house of-thee. The-children of-thee as



novéllae oli-várum in circú-i-tu mensae tuae.

young olive-plants round about the-table of-thee.

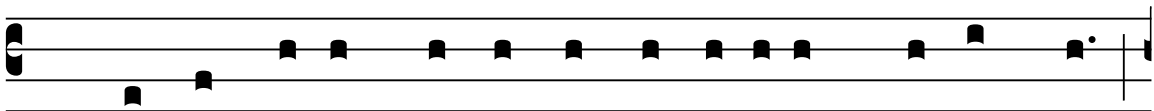
As with any Gradual, the first section ("Uxor tua") may be repeated after the verse.

VIII

A



L- le- lú- ia. * *ij.*



Vs. Mittat vobis Dómi-nus auxí-li-um de sancto:

May-send you the-Lord help from sanctuary,



et de Si-on tu-e-átur vos.

& out-of Sion defend you.

* The ALLELUIA is now sung straight through.

Different chants are used for Nuptial Masses in Eastertide or Lent.