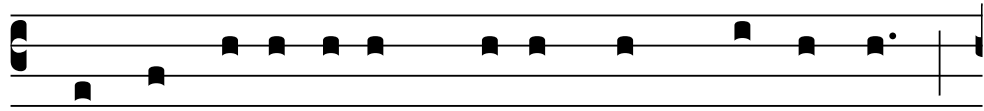


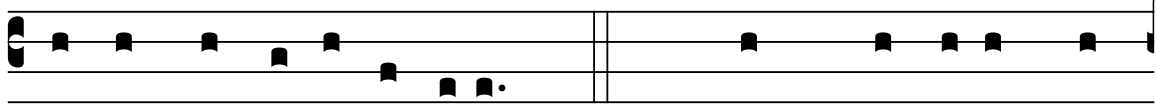
MODE VIII

J



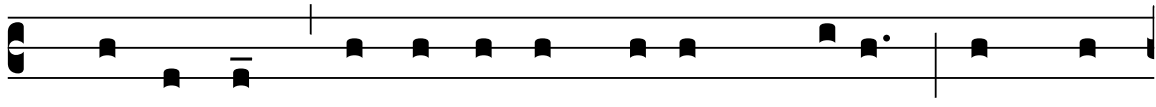
Acta cogi-tátum tu-um in Dómi-no:

*Cast the-cares of-thee upon the-Lord*



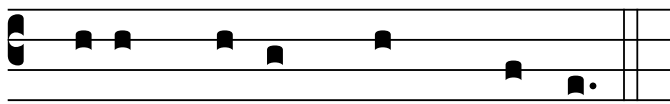
et i-pse te enútri-et. Vs. Dum clamárem ad

*& He-shall thee sustain. When I-cried to*



Dómi-num, exaudí-vit vocem me-am ab his,

*the-Lord, He-heard the-voice of-me from them*



qui appropínquant mi-hi.

*who draw-near to-me.*

GRADUAL & ALLELUIA • 3rd Sunday after Pentecost, EF (Ps 54: 23, 17, 19)

Cast your cares upon the Lord and he will sustain you. Vs. When I cried to the Lord, he heard my voice in the midst of those who came against me.

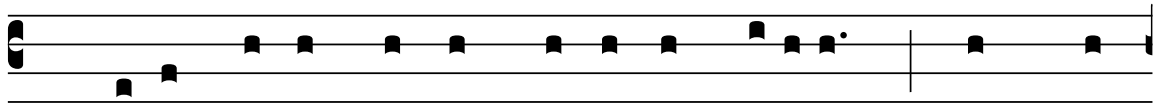
ALLELUIA, ALLELUIA. (Ps 7: 12) Vs. God is a just judge, strong and patient. Can he be angry every day? ALLELUIA.

VIII

A

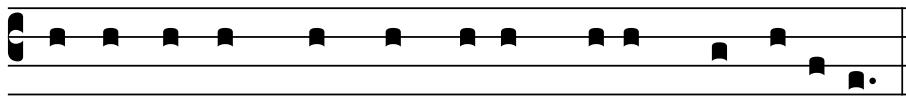


L- le- lú- ia. \* ij.



Vs. Deus iudex justus, fortis et páti-ens, numquid

*God-is-a judge-Who is-just, strong & patient; is-He*



i-rásci-tur per síngulos di-es? Allelúja.

*angry during every day? Praise-the-Lord.*

\* ALLELUIA is now sung straight through.