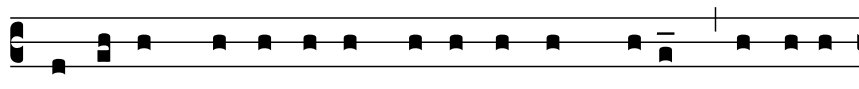
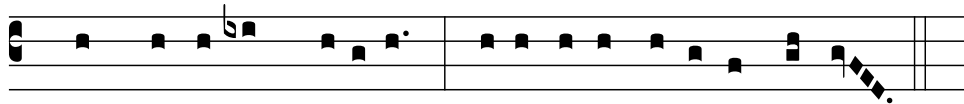


Gradual & Alleluia • 13th Sunday after Pentecost

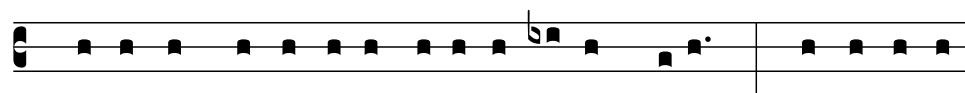
R



éspi-ce, Dómi-ne, in testaméntum tu-um: et áni-



mas páupe-rum tu-órum ne obli-vi-scá-ris in fi-nem.

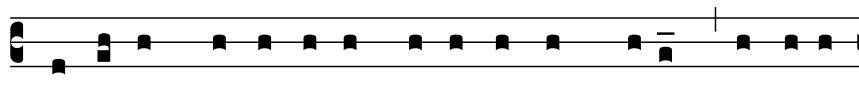


Vs. Exsúrge, Dómi-ne, et júdi-ca causam tu-am: memor esto

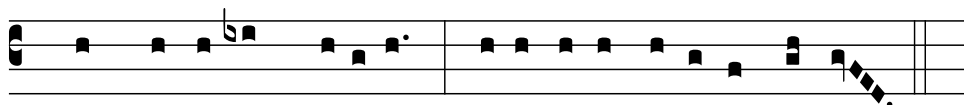


oppróbri-i servórum tu-órum.

R



éspi-ce, Dómi-ne, in testaméntum tu-um: et áni-



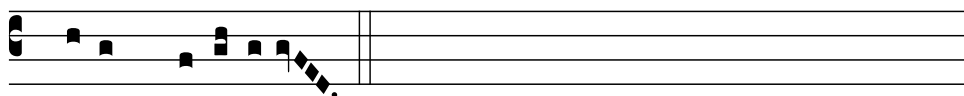
mas páupe-rum tu-órum ne obli-vi-scá-ris in fi-nem.

Allelúja, allelúja.

D



ómi-ne, refúgi-um factus es nobis a genera-ti-ó-



ne et progéni-e.

Allelúja.