

Gospel Acclamation. V (Year C)

☩ Praise to you, Lord Je- sus Christ, King of end- less glo- ry.

Musical notation for the first part of the Gospel Acclamation. It consists of two staves: a treble clef staff and a bass clef staff. The key signature is three flats (B-flat, E-flat, A-flat) and the time signature is common time (C). The melody is written in the treble staff, and the organ accompaniment is in the bass staff. The piece concludes with a double bar line.

Verse

☩ I will go up to my Father and shall say to him: Fa- ther, I have sinned

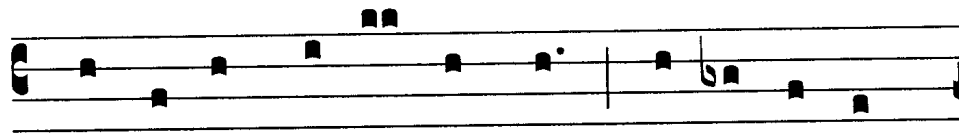
Musical notation for the first part of the Verse. It consists of two staves: a treble clef staff and a bass clef staff. The key signature is three flats (B-flat, E-flat, A-flat) and the time signature is common time (C). The melody is written in the treble staff, and the organ accompaniment is in the bass staff. The piece concludes with a double bar line.

against heaven and a- gainst you.

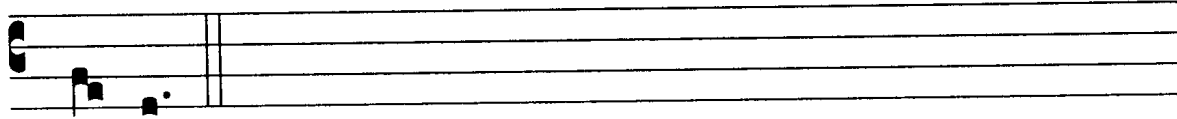
Musical notation for the second part of the Verse. It consists of two staves: a treble clef staff and a bass clef staff. The key signature is three flats (B-flat, E-flat, A-flat) and the time signature is common time (C). The melody is written in the treble staff, and the organ accompaniment is in the bass staff. The piece concludes with a double bar line.

Gospel Acclamation. V (Year C)

P

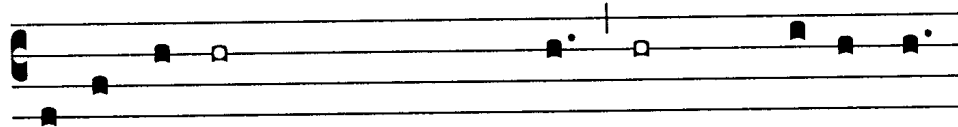


Raise to you, Lord Je- sus Christ, King of end-less

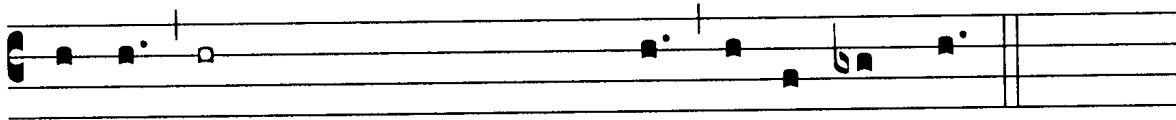


glo- ry.

I



will get up and go to my Father and shall say to him :



Fa-ther, I have sinned against heaven and a- gainst you.