

A Lord, send out your Spir - it, and re - new_ the face_ of the earth.

B Lord, send out your Spir - it, and re - new_ the face_ of the earth.

C Lord, send out your Spir - it, and re - new_ the face_ of the earth.

D Lord, send out your Spir - it, and re - new_ the face_ of the earth.

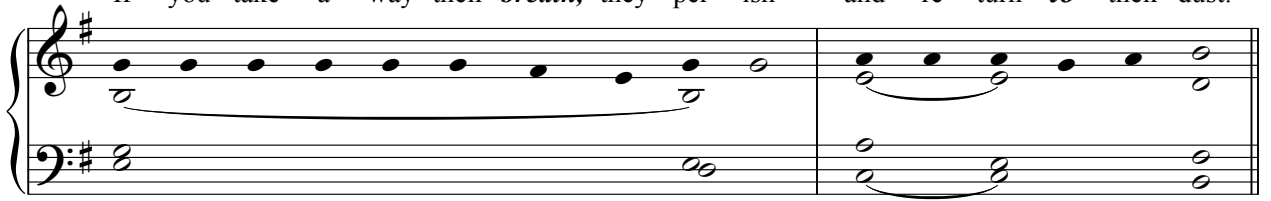
ALLELUIA can also be used as the REFRAIN

1 Bless the Lord, **O** my soul! O Lord, my God, you are *great* in - deed!

How man - i - fold are your *works*, O Lord! the earth is full *of* your crea - tures;

2

If you take a - way their *breath*, they per - ish and re - turn *to* their dust.

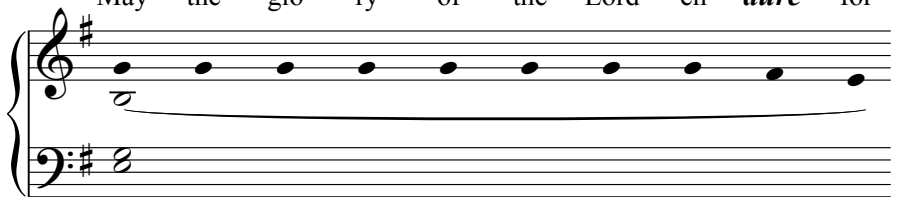


When you send forth your spir - it, they *are* cre - at - ed, and you re - new the face *of* the earth.

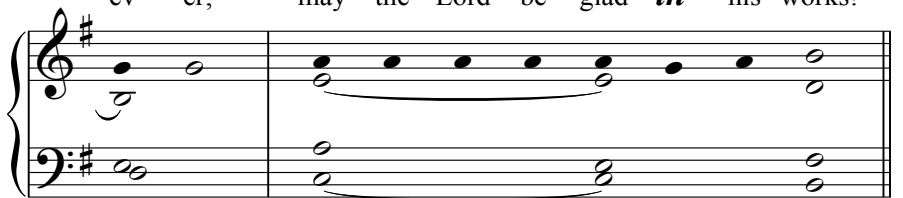


Psalm Verse no. 3

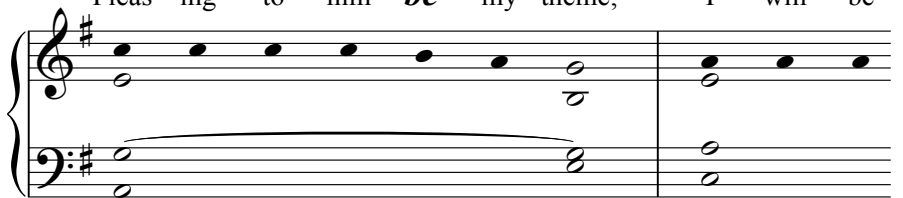
May the glo - ry of the Lord en - *dure* for



ev - er; may the Lord be glad *in* his works!



Pleas - ing to him *be* my theme; I will be



glad *in* the Lord.

