

ENTRANCE CHANT from the Graduale Romanum (1974)

— First Sunday of Lent.

Translated into English. Musical setting by Corpus Christi Watershed.

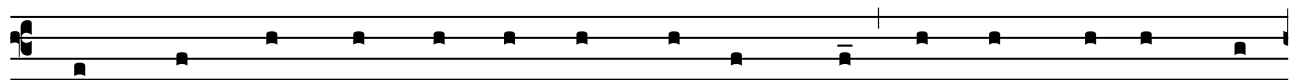
Collection date: 2013

42

1st Sunday of Lent

Introit (Ps 90:15-16, 1)

Invocábit me, et ego exáudiam eum: erípiam eum, et glorificábo eum: longitúdine diérum adimplébo eum. Vs. Qui hábitat in adjutório Altíssimi, in protectióne Dei commorábitur.



When he calls to me, I will an-swer him; I will res-cue him



and hon-our him; with long life will I sat-is-fy him. Vs. He who



a-bides in the shel-ter of the Most High, shall re-main un-der the



pro-tec-tion of the God of Heav-en. Vs. Glo-ry be to the Fa-ther,



and to the Son, and to the Ho-ly Spir-it. As it was in the



be-gin-ning, is now, and ev-er shall be, world with-out end. A-men.

“When he calls to me, I will answer him . . .” is repeated.