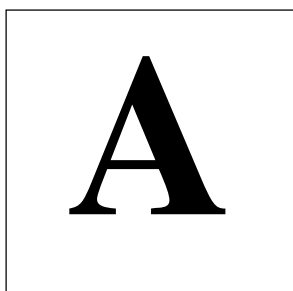


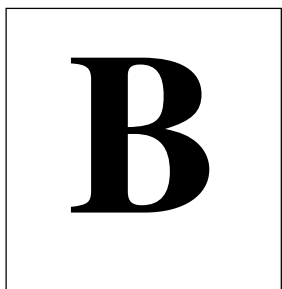


# Cardinal Cesare Baronius Refrain

The Lord is near to all who call up - on Him.

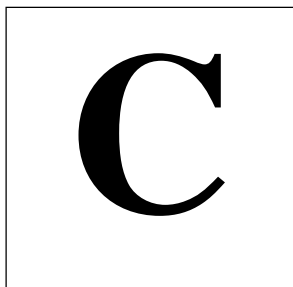


A musical score for the letter 'A'. The score is written on a grand staff with a treble clef on the top line and a bass clef on the bottom line. The melody is in the treble clef, starting on a middle C and moving up stepwise to a G. The bass line provides a simple accompaniment with chords and single notes. The lyrics 'The Lord is near to all who call up - on Him.' are written above the staff.



The Lord is near to all who call up - on Him.

A musical score for the letter 'B'. The score is written on a grand staff with a treble clef on the top line and a bass clef on the bottom line. The melody is in the treble clef, starting on a middle C and moving up stepwise to a G. The bass line provides a simple accompaniment with chords and single notes. The lyrics 'The Lord is near to all who call up - on Him.' are written above the staff.



The Lord is near to all who call up - on Him.

A musical score for the letter 'C'. The score is written on a grand staff with a treble clef on the top line and a bass clef on the bottom line. The melody is in the treble clef, starting on a middle C and moving up stepwise to a G. The bass line provides a simple accompaniment with chords and single notes. The lyrics 'The Lord is near to all who call up - on Him.' are written above the staff.