

“Chant Part” of Palestrina Sanctus (Vexilla)

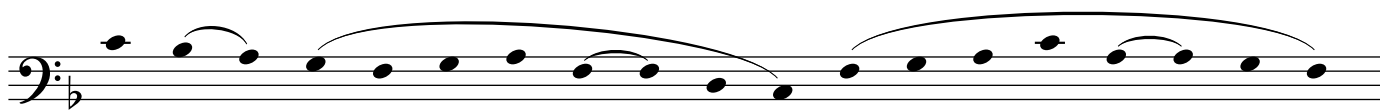
S



An - ctus, San - ctus, _



San - ctus_ Dó - mi - nus



De - us_ Sá - ba - oth.



Ple - ni sunt cae - li et ter - ra_



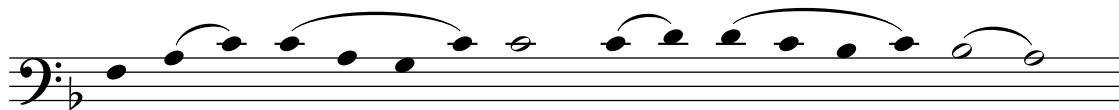
gló - ri - a tu - a. Ho... Ho...

This part is only sung if the Palestrina “Bert” is not sung...



{ Ho - sán - na in ex - cél - sis. }

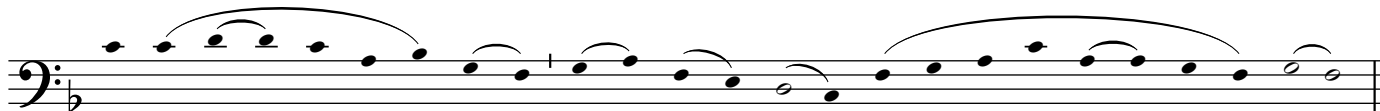
*
Be - ne - dí - ctus qui ve - nit



Be - ne - dí - ctus qui ve - nit



in nó - mi - ne Dó - mi - ni. Ho... Ho...



{ Ho sán - na in ex - cél - sis. }