

# Alleluia

for the Fifth Sunday of Easter / Year C

Tone VIII

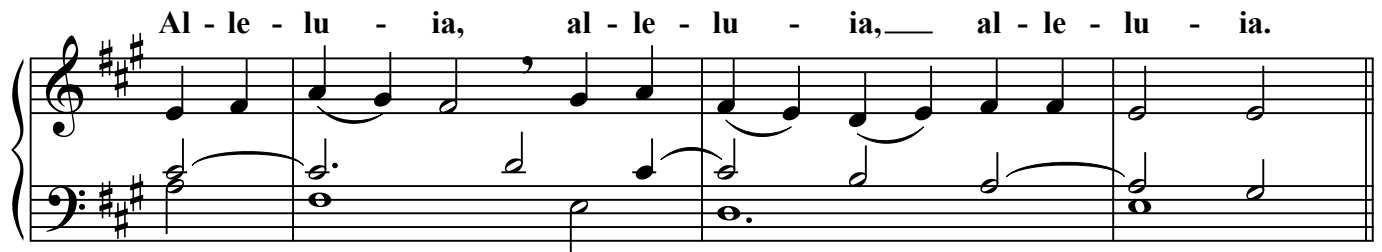
Organ:



Organ accompaniment for the first Alleluia line, consisting of two staves (treble and bass clef) in G major (one sharp). The music features a steady eighth-note accompaniment in the bass and a more melodic line in the treble.

Cantor:

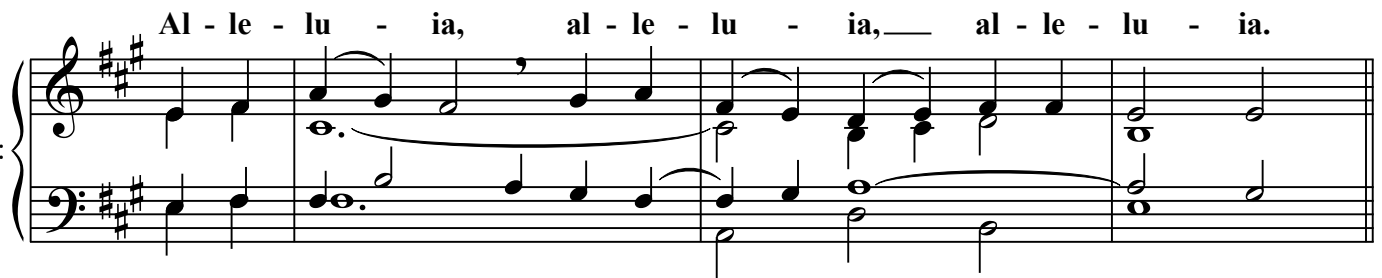
Al - le - lu - ia, al - le - lu - ia, — al - le - lu - ia.



Cantor's vocal line for the first Alleluia line, consisting of two staves (treble and bass clef) in G major. The melody is simple and follows the text.

All:

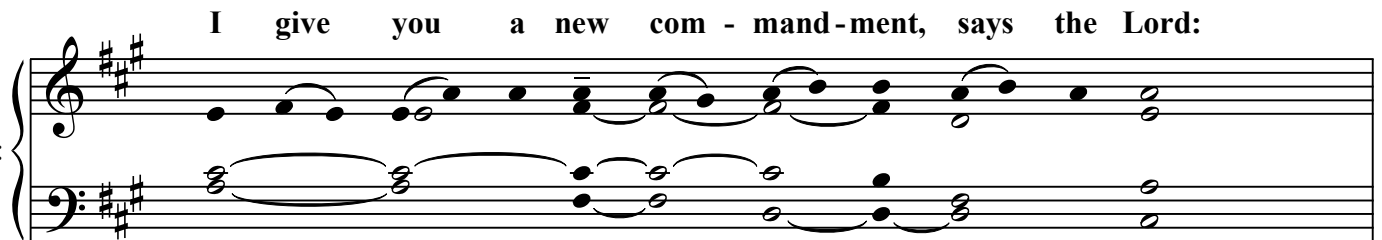
Al - le - lu - ia, al - le - lu - ia, — al - le - lu - ia.



All's accompaniment for the first Alleluia line, consisting of two staves (treble and bass clef) in G major. The music is similar to the organ part but with a more prominent bass line.

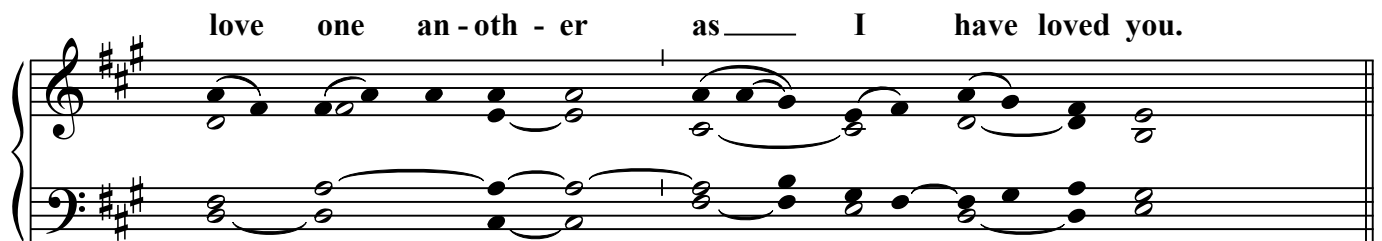
Cantor:

I give you a new com - mand - ment, says the Lord:



Cantor's vocal line for the second Alleluia line, consisting of two staves (treble and bass clef) in G major. The melody is more complex and features some grace notes.

love one an - oth - er as — I have loved you.



All's accompaniment for the second Alleluia line, consisting of two staves (treble and bass clef) in G major. The music is similar to the organ part but with a more prominent bass line.

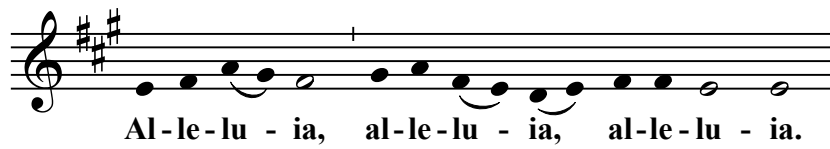
All:

Al - le - lu - ia, al - le - lu - ia, — al - le - lu - ia.



All's accompaniment for the third Alleluia line, consisting of two staves (treble and bass clef) in G major. The music is similar to the organ part but with a more prominent bass line.

Copy for reprinting in service leaflet or bulletin:

**Alleluia***Tone VIII*

Music: © 2016 Royce Nickel. Licensed in the Creative Commons by-nc-nd 3.0