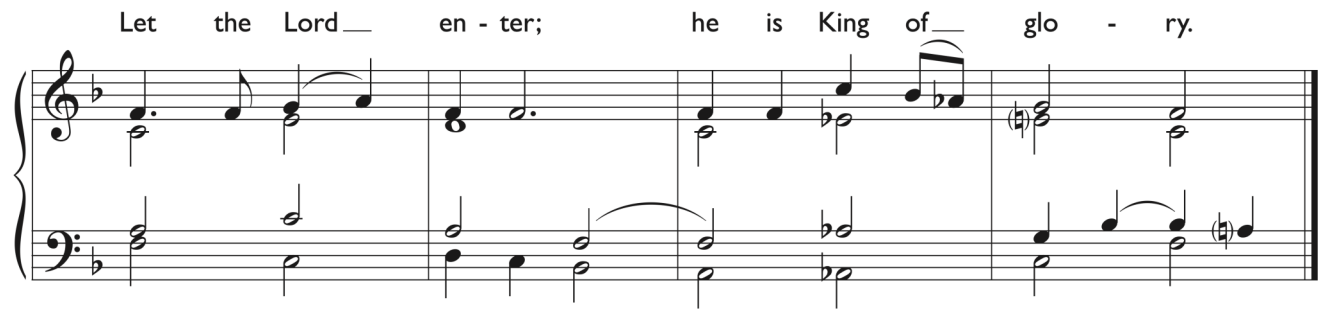


# 4th Sunday of Advent Year A

*Ps.24:1-2, 3-4, 5-6*

**A**

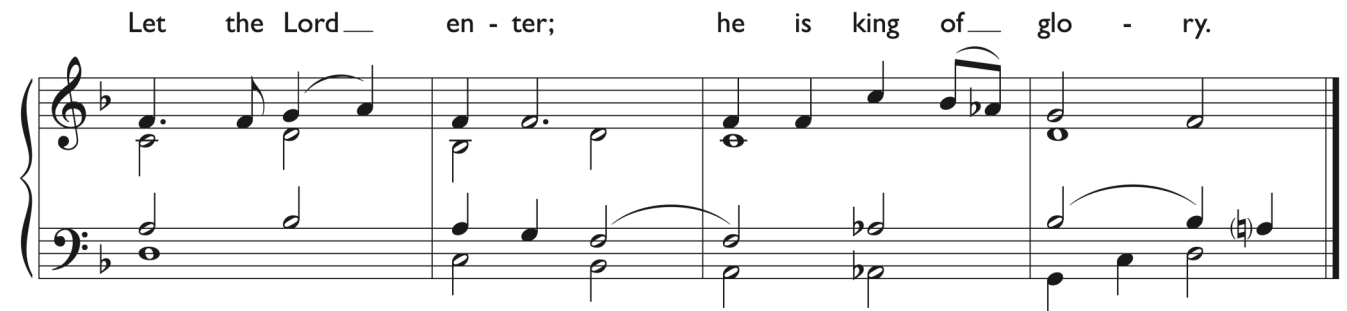
Let the Lord\_\_ en - ter; he is King of\_\_ glo - ry.



Part A is a musical score for a piano accompaniment. It features a treble and bass staff. The treble staff has a key signature of one flat (B-flat) and a common time signature. The melody begins with a dotted quarter note on G4, followed by an eighth note on A4, a quarter note on B-flat4, and a half note on C5. The bass staff provides a harmonic accompaniment with a dotted quarter note on G3, an eighth note on A3, a quarter note on B-flat3, and a half note on C4. The piece concludes with a final chord in the right hand.

**B**

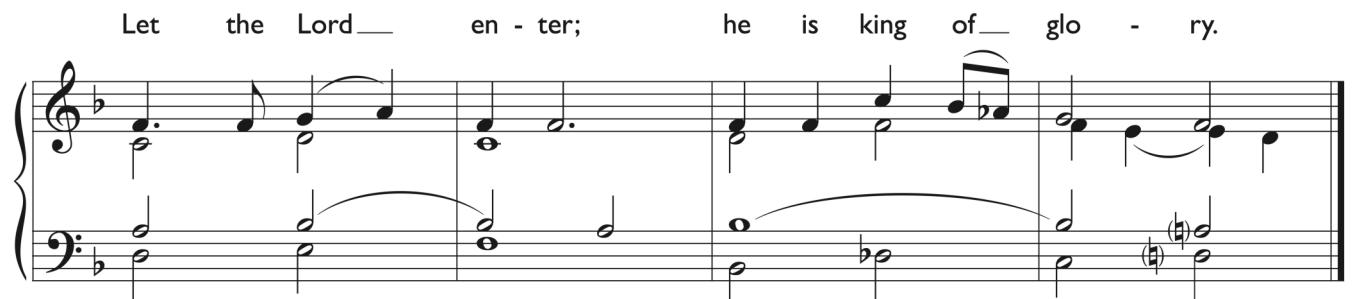
Let the Lord\_\_ en - ter; he is king of\_\_ glo - ry.



Part B is a musical score for a piano accompaniment, similar to Part A. It features a treble and bass staff. The treble staff has a key signature of one flat (B-flat) and a common time signature. The melody begins with a dotted quarter note on G4, followed by an eighth note on A4, a quarter note on B-flat4, and a half note on C5. The bass staff provides a harmonic accompaniment with a dotted quarter note on G3, an eighth note on A3, a quarter note on B-flat3, and a half note on C4. The piece concludes with a final chord in the right hand.

**C**

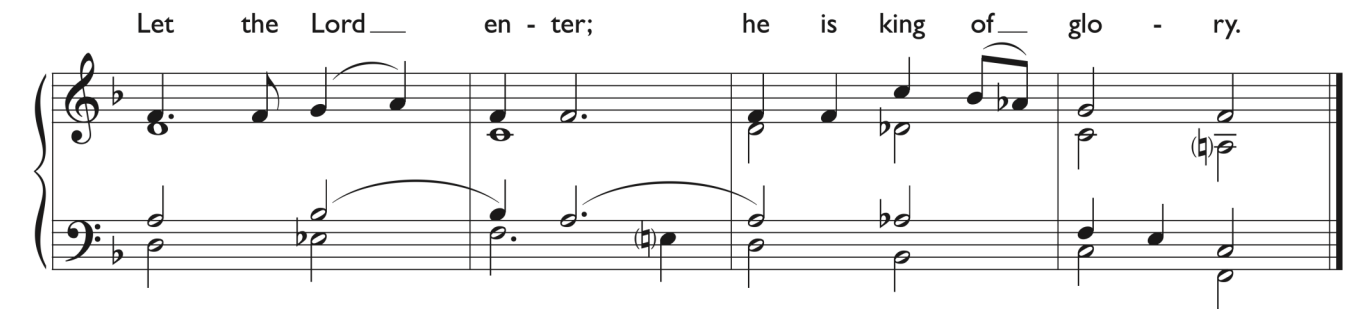
Let the Lord\_\_ en - ter; he is king of\_\_ glo - ry.



Part C is a musical score for a piano accompaniment, similar to Part A. It features a treble and bass staff. The treble staff has a key signature of one flat (B-flat) and a common time signature. The melody begins with a dotted quarter note on G4, followed by an eighth note on A4, a quarter note on B-flat4, and a half note on C5. The bass staff provides a harmonic accompaniment with a dotted quarter note on G3, an eighth note on A3, a quarter note on B-flat3, and a half note on C4. The piece concludes with a final chord in the right hand.

**D**

Let the Lord\_\_ en - ter; he is king of\_\_ glo - ry.



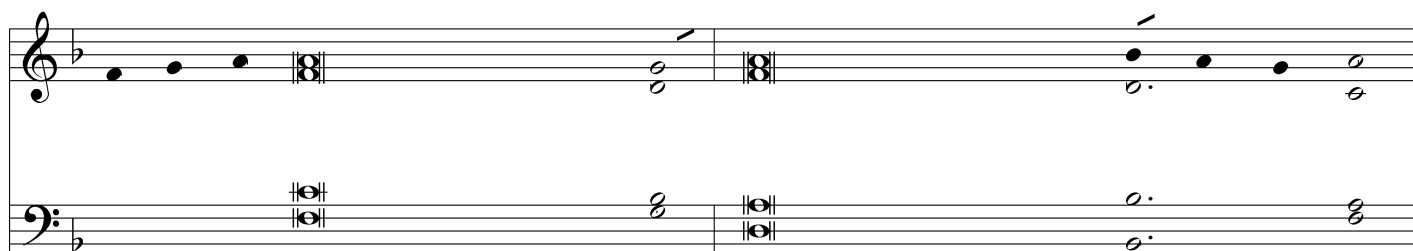
Part D is a musical score for a piano accompaniment, similar to Part A. It features a treble and bass staff. The treble staff has a key signature of one flat (B-flat) and a common time signature. The melody begins with a dotted quarter note on G4, followed by an eighth note on A4, a quarter note on B-flat4, and a half note on C5. The bass staff provides a harmonic accompaniment with a dotted quarter note on G3, an eighth note on A3, a quarter note on B-flat3, and a half note on C4. The piece concludes with a final chord in the right hand.

**E**

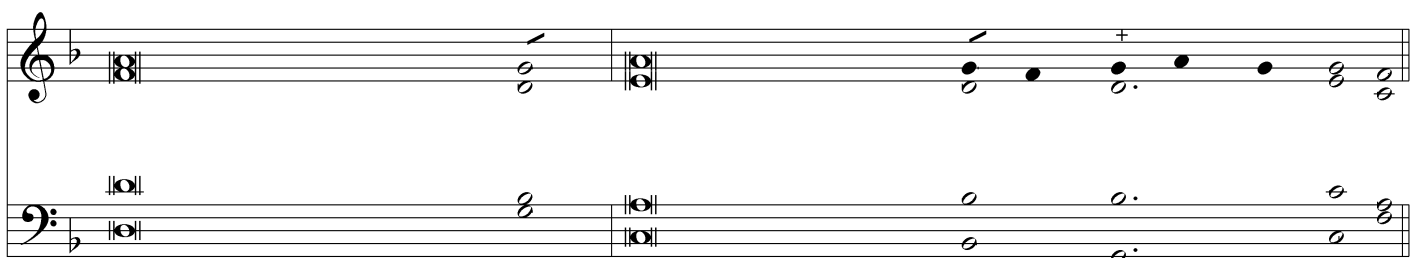
Let the Lord\_\_ en - ter; he is King of\_\_ glo - ry.



Part E is a musical score for a piano accompaniment, similar to Part A. It features a treble and bass staff. The treble staff has a key signature of one flat (B-flat) and a common time signature. The melody begins with a dotted quarter note on G4, followed by an eighth note on A4, a quarter note on B-flat4, and a half note on C5. The bass staff provides a harmonic accompaniment with a dotted quarter note on G3, an eighth note on A3, a quarter note on B-flat3, and a half note on C4. The piece concludes with a final chord in the right hand.



1. *The LORD's are* the earth and its ***fullness*** / the world and those ***who*** dwell in it.
2. *Who can as -* cend the mountain of the ***LORD?*** / or who may stand in ***his*** ho - ly place?
3. *He shall re -* ceive a blessing from the ***LORD,*** / a reward from ***God*** his sav - vior.



1. For he founded it upon the ***seas*** / and established ***it*** u- pon the riv-ers.
2. One whose hands are sinless,  
whose heart is ***clean,*** / who de - ***sires*** not what is vain .
3. Such is the race that seeks for ***him,*** / that seeks the face ***of*** the God of Ja -cob.

