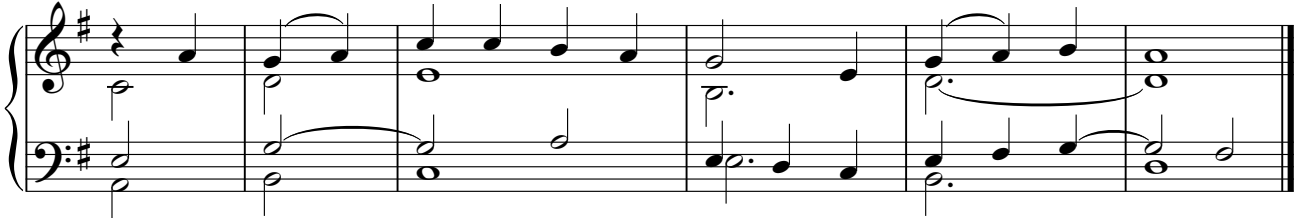


1401 • August 15, Assumption of the Blessed Virgin Mary (ABC)

Ps. 45:10, 11, 12, 16 • Jeff Ostrowski • ccwatershed.org

A

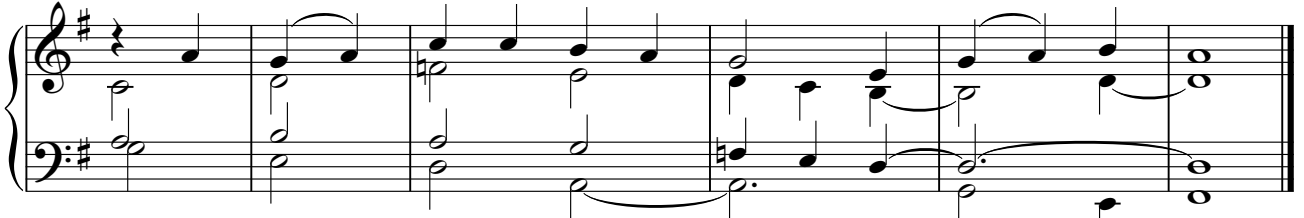
The queen stands at your right hand, ar - rayed_ in gold.



Musical score for part A, featuring a piano accompaniment and a vocal line. The key signature is one sharp (F#) and the time signature is 4/4. The piano part consists of a steady bass line with chords in the right hand. The vocal line is a simple melody with a final note on a sharp signifying a fermata.

B

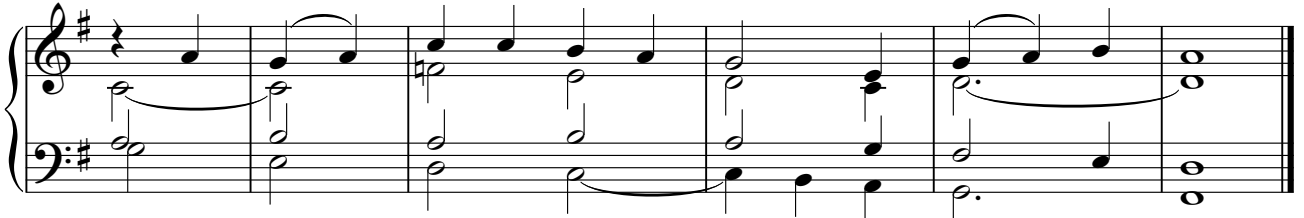
The queen stands at your right hand, ar - rayed_ in gold.



Musical score for part B, featuring a piano accompaniment and a vocal line. The key signature is one sharp (F#) and the time signature is 4/4. The piano part consists of a steady bass line with chords in the right hand. The vocal line is a simple melody with a final note on a sharp signifying a fermata.

C

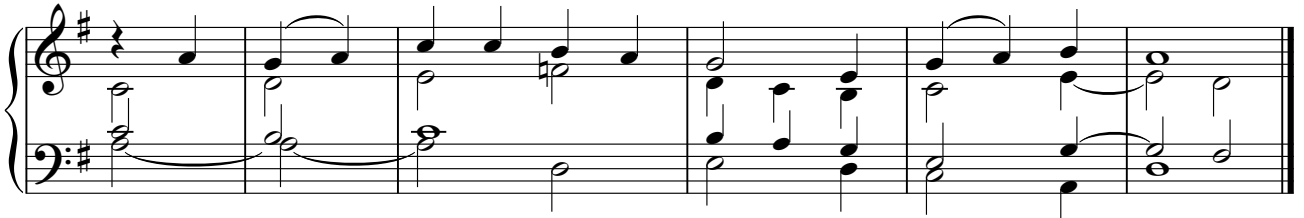
The queen stands at your right hand, ar - rayed_ in gold.



Musical score for part C, featuring a piano accompaniment and a vocal line. The key signature is one sharp (F#) and the time signature is 4/4. The piano part consists of a steady bass line with chords in the right hand. The vocal line is a simple melody with a final note on a sharp signifying a fermata.

D

The queen stands at your right hand, ar - rayed_ in gold.



Musical score for part D, featuring a piano accompaniment and a vocal line. The key signature is one sharp (F#) and the time signature is 4/4. The piano part consists of a steady bass line with chords in the right hand. The vocal line is a simple melody with a final note on a sharp signifying a fermata.

E


The queen stands at your right hand, ar - rayed_ in gold.



Musical score for part E, featuring a piano accompaniment and a vocal line. The key signature is one sharp (F#) and the time signature is 4/4. The piano part consists of a steady bass line with chords in the right hand. The vocal line is a simple melody with a final note on a sharp signifying a fermata.

1

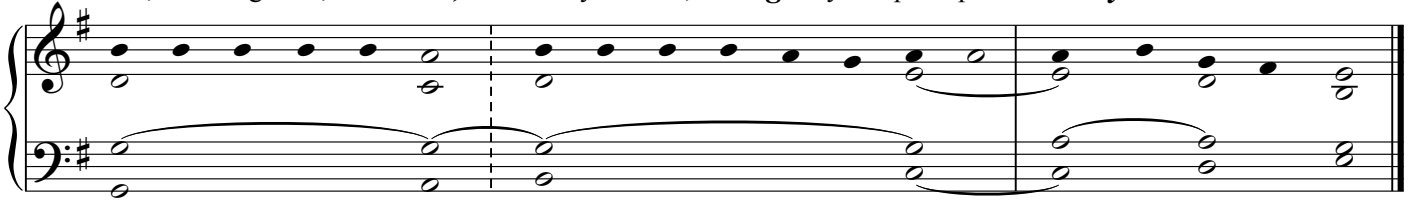
The queen takes her place at *your* right hand in gold *of* O - phir.



Musical score for part 1, featuring a piano accompaniment and a vocal line. The key signature is one sharp (F#) and the time signature is 4/4. The piano part consists of a steady bass line with chords in the right hand. The vocal line is a simple melody with a final note on a sharp signifying a fermata.

Psalm Verse no. 2

Hear, O daugh-ter, and *see*; turn your ear, for *-get* your peo-ple and *your* fa-ther's house.



So shall the king de-*sire* your beau-ty; for *he* is your lord.

3



Psalm Verse no. 4

They are borne in with glad-*ness* and joy; they en-ter the pal-*ace* of the king.

