

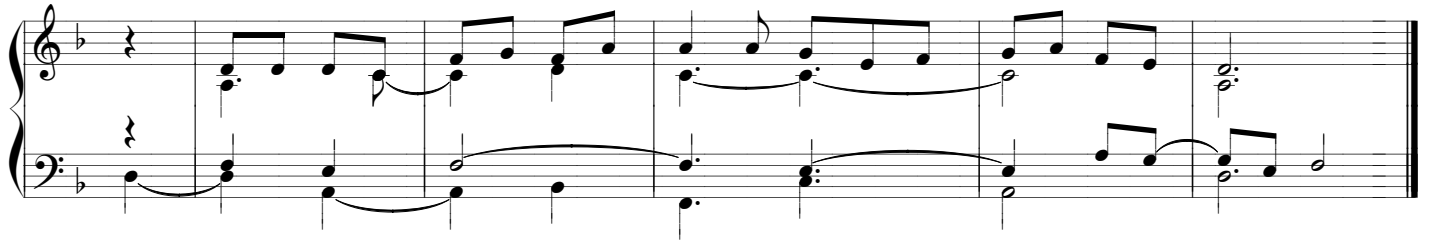
Fourth Sunday

Year A

Tone I

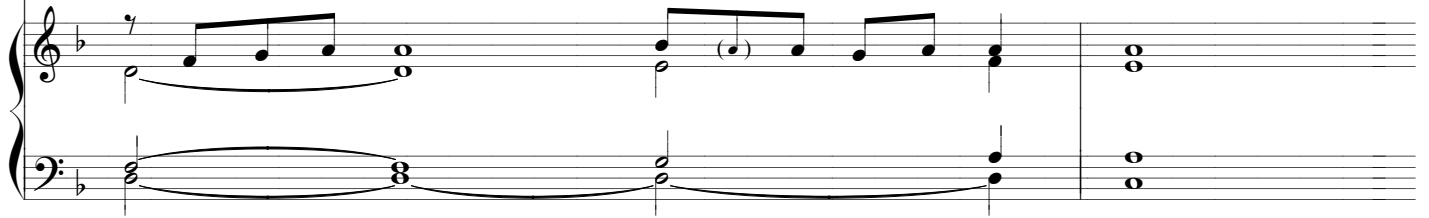
Mt 5: 3 v. Ps 146: 6-7, 8-9, 9-10

R. Bless-ed are the poor in spir - it; the king-dom of heav-en is — theirs!



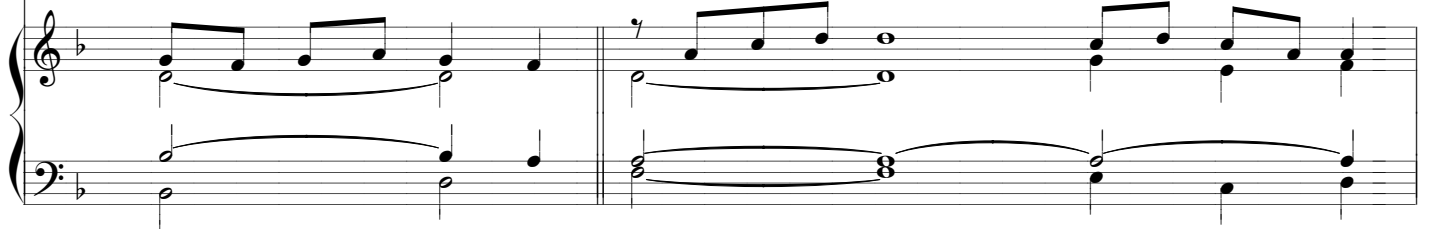
Piano accompaniment for the first system of the hymn, featuring a treble and bass clef with a key signature of one flat (B-flat).

1. The Lord — keeps ——— faith for - ev - er, secures justice ———
2. The Lord — gives ——— sight ——— to the blind; the Lord raises up those —
3. The fa - therless and the — wid - ow the Lord sus - tains, but the way of the —



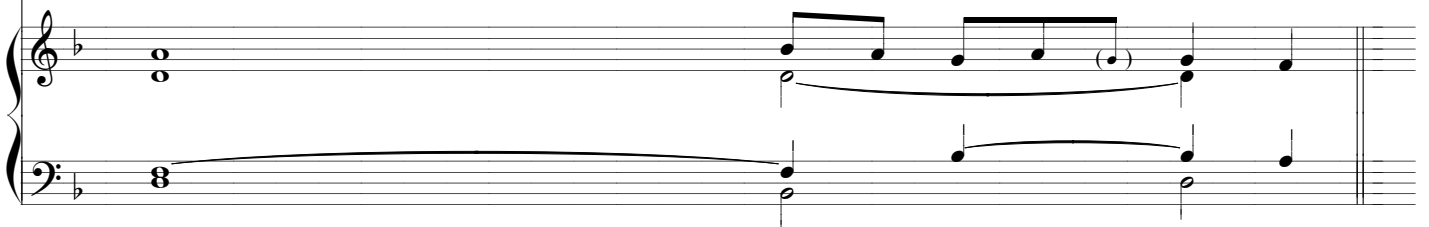
Piano accompaniment for the second system of the hymn, continuing the treble and bass clef with a key signature of one flat.

1. for the op - pressed, — — — — — gives food ——— to the hun - gry.
2. who were bowed — down. — — — — — The ——— Lord — loves the just;
3. wick - ed he — thwarts. — — — — — The Lord — shall ——— reign for - ev - er;



Piano accompaniment for the third system of the hymn, continuing the treble and bass clef with a key signature of one flat.

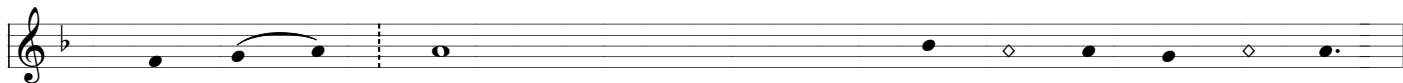
1. The ——— Lord sets cap - tives free. ——— R.
2. the Lord pro - ——— tects ——— strang - ers. ——— R.
3. your God, O Zion, through all generations. \ ——— Al - le - lu - ia. ——— R.



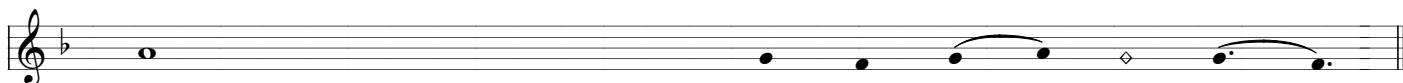
Piano accompaniment for the fourth system of the hymn, concluding the treble and bass clef with a key signature of one flat.

Fourth Sunday, Year A

Verses a cappella



1. The Lord _____ keeps _____ faith for - ev - er,
gives _____ food to the hun - gry.
2. The Lord _____ gives _____ sight to the blind;
The _____ Lord loves the just;
3. The fa - therless and the _____ wid - ow the Lord sus - tains,
The Lord shall _____ reign for - ev - er;



1. secures justice _____ for the o - pressed, _____
The _____ Lord sets cap - tives free. _____
2. the Lord raises up those _____ that were bowed _____ down. _____
the Lord _____ pro - tects strang - ers. _____
3. but the way of the _____ wick - ed he _____ thwarts. _____
your God, O Zion, through all generations. _____ Al - le - lu - ia. _____