

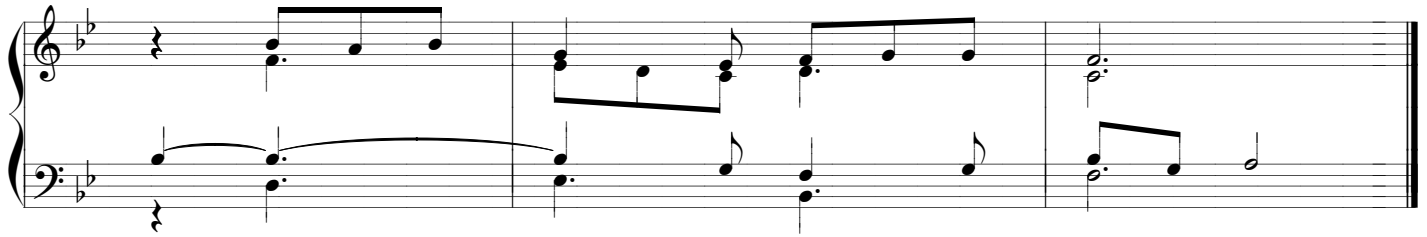
Solemnity of Corpus Christi

Year A

Tone VIII

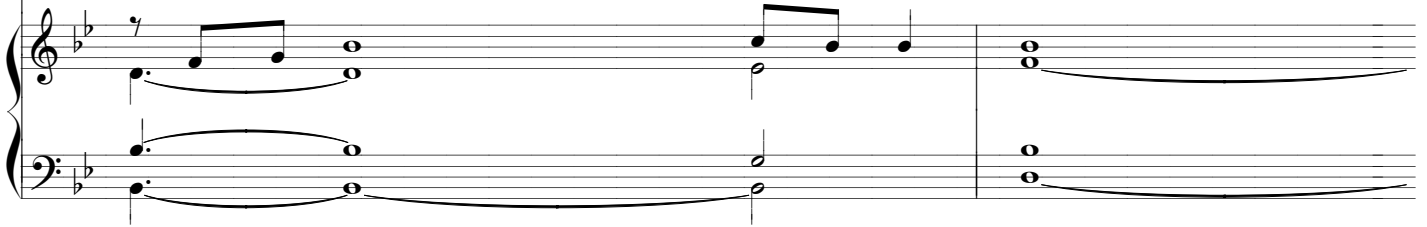
Ps 147: 12 v. 12-13, 14-15, 19-20

R. Praise the Lord, Je - ru - sa - lem.



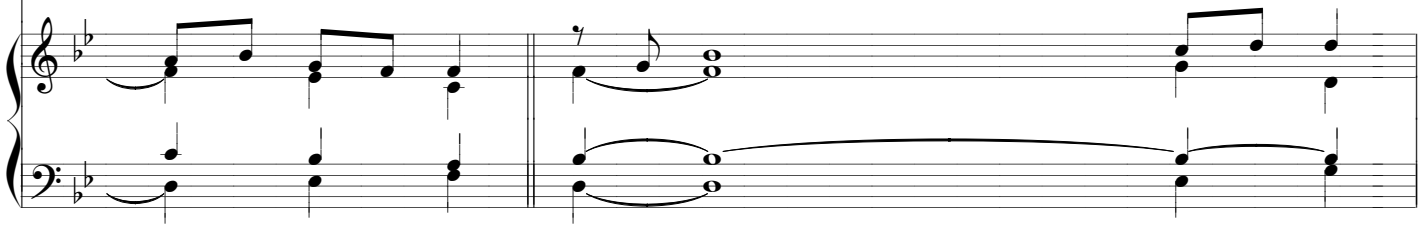
Piano accompaniment for the first system of the hymn, featuring a treble and bass clef with a key signature of two flats (B-flat and E-flat).

1. Glo - ri - fy the Lord, O Je - ru - sa - lem; praise your
2. He has granted peace in your bor - ders; with the best of
3. He has proclaimed his word to Ja - cob, his statutes and his ordinances



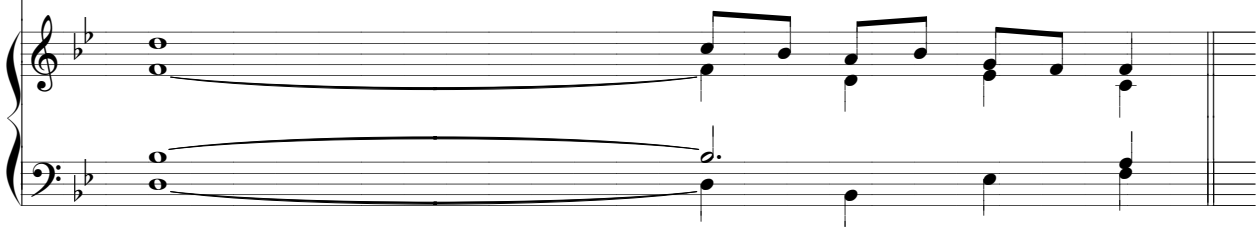
Piano accompaniment for the second system of the hymn, continuing the treble and bass clef with a key signature of two flats.

1. God, O Zi - on. For he has strengthened the bars of your gates;
2. wheat he fills you. He sends forth his command to the earth;
3. to Is - ra - el. He has not done thus for any other na - tion;



Piano accompaniment for the third system of the hymn, continuing the treble and bass clef with a key signature of two flats.

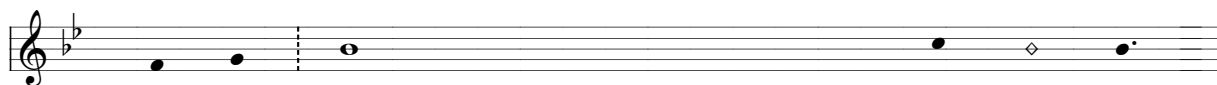
1. he has blessed your chil - dren with - in you. R.
2. --- swift - ly runs his word! R.
3. his ordinances he has not made known to them. Al - le - lu - ia. R.



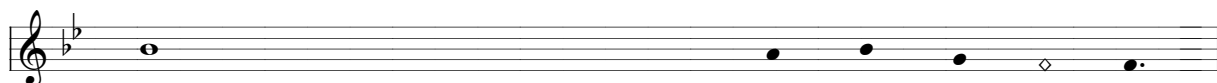
Piano accompaniment for the fourth system of the hymn, concluding the treble and bass clef with a key signature of two flats.

Solemnity of Corpus Christi, Year A

Verses, a cappella



1. Glo - ri - fy the Lord, O Je - _____ ru - sa - lem;
For he has strengthened the bars _____ of your gates;
2. He has granted peace in your _____ bor - ders;
He sends forth his command _____ to the earth;
3. He has proclaimed his word to _____ Ja - cob,
He has not done thus for any other _____ na - tion;



1. praise your _____ God, O Zi - on.
he has blessed your chl - _____ dren with - in you.
2. with the best of _____ wheat he fills you.
- - - _____ swift - ly runs his word!
3. his statutes and his ordinanc - _____ es to Is - ra - el.
his ordinances he has not made known to them. ____ Al - le - lu - ia.