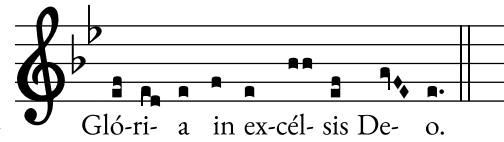


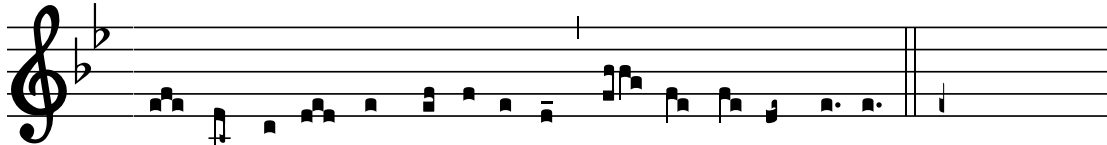


VATICAN MASS III
GLORIA

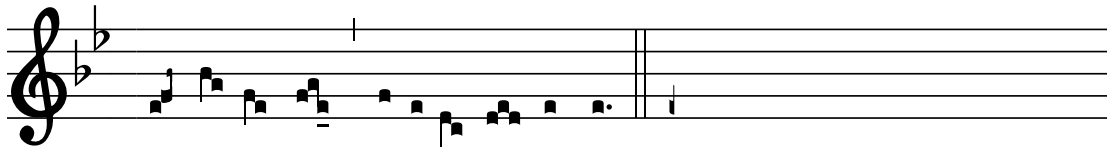
This score is notated according to the official rhythm
(i.e. the interpretation mandated by Pope Saint Pius X).



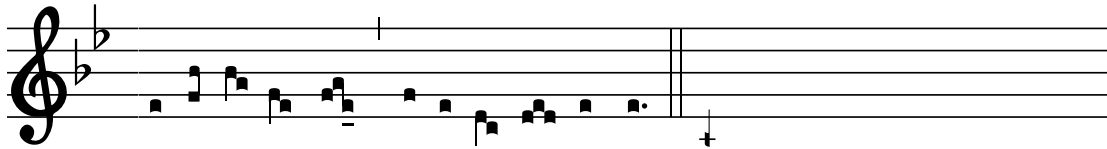
*Including a polyphonic section in honor of Saint René Goupil by
Kevin Allen, commissioned by Sacred Music Symposium 2025. ✠*



Tutti: Et in terra pax homí-ni-bus bo- nae vo- lun-tá- tis.



Women: Lau-dámus te. Benedí- ci- mus te.



Men: Ado-rámus te. Glo-ri- fi- cá- mus te.



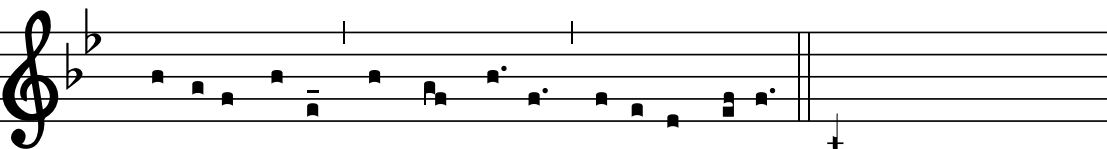
Women: Grá-ti- as á-gimus ti-bi propter ma- gnam gló-ri- am tu- am.



Men: Dómine De- us, Rex cae- lé- stis, De- us Pa- ter o- mní- pot- ens.



Wñ: Dómine Fi- li uni- géni- te Je- su Chri- ste.



Tutti: Dómine De- us, Agnus De- i, Fí- li- us Patris.

Polyphonic section in honor of Saint René Goupil commissioned by Sacred Music Symposium 2025.

Kevin Allen

Moderato

S *mf* Te R M M F S R F R (R) L L D R
Qui tol - lis pec-cá-ta mun-di, mi-se - ré - re

A *mf* R F S S S F S F D L F S F M L F
Qui tol - lis pec - cá - ta mun - di, mi-se-ré-re no -

T *mf* Te R M M F S R F F M F S M F R R L Te D R L
Qui tol - lis pec-cá-ta mun - di, pec - cá - ta, pec - cá - ta mun - di,

B *mf* R F S S S D Te L R R D M R L R L L F R
Qui tol - lis pec - cá - ta mun - di, pec - cá - ta mun - di, mi-se - ré - re

11 S M R Te R M M F S R F R F F R R R R D
no - bis. Qui tol - lis pec-cá-ta mun - di, sú - sci-pe de-pre-ca - ti-

A S F M R F S D L L L F R F L L R Te S L L R L
- bis. Qui tol - lis pec - cá - ta, pec-cá-ta mun - di, sú-sci-pe de-pre-ca -

T D D F M R D Te S L D R R M F R F R F M R D F R F R M
mi-se - ré - re__ no - bis. Qui tol - lis pec-cá-ta mun - di, sú - sci-pe de - pre-ca-ti-

B D Te F S F M L L R L R (R) L R D Te L S F F R F
no - bis. Qui tol - lis pec - cá - ta mun - di, sú - sci-pe de-pre-ca - ti -

19 S T L F S M M M L S F M R F M R D T M R *p*(R) R
ó - nem no stram, de-pre - ca - ti - ó - nem no - stram. Qui se - des ad

A (L) S S F S L T D L D L T L S T L F M F *p* F
- ti-ó - - nem no - stram, no - - stram. Qui se - des, qui

T R M F M D D D R M D R F R R M R D T D T D R M M *p*
ó - nem no - stram, de-pre - ca - ti - ó - nem, de-pre - ca - ti - ó - nem no - stram. Qui

B S R R R L S F M R S M S F S L S R *p* D
ó - nem de-pre - ca - ti - ó - nem no - stram, de-pre - ca - ti - ó - nem no - stram. Qui

29

S S R (R) D R (R) M F *f* S (S) F M R D R D R L S L D T L

déx-te-ram, ad déx - te-ram Pa - - - tris, Pa - tris, Pa -

A F F Te Te L L Te L S F M R M F S L F D L L T L S F F S L S

se - des, qui se - des ad déx - - - - te-ram, ad déx - te-ram Pa - tris,

T R M F F F M R D *f* Te D R F (F) S D R D R M D R

se - des ad déx-te-ram, Pa - tris, Pa - - - tris, mi-se-ré-re no - bis,

B Te Te F S R *f* S L Te L L R M F F F

se - des ad déx - te - ram, ad déx - te-ram Pa - tris, mi - se-

39 *Rallentando*

S S R D T L R R T L S *p* S (S)

tris, mi - se - ré - re, mi-se - ré - re no - bis.

A F M R D R (R) M F R R S F S R F F M F R R F S *p* L L T S F M R

Pa - tris, mi-se - ré - re, mi-se - ré-re, mi-se - ré-re, mi-se - ré-re, mi-se - ré-re no - bis.

T R D R T S F S R F M R D R T R R D (D) L T D T *p*

mi-se - ré - re, mi-se - ré-re, mi-se - ré-re no - bis, mi-se - ré - re no - - - bis.

B Te L S (S) S Te L S S R *p* S R S

ré - re, mi - se - ré - re, mi - se - ré - re no - - - bis.

Tutti: Quóni- am tu so-lus sanctus. Tu so-lus Dóminus.

Wñ: Tu so-lus Al-tís-si-mus, Je- su Chri- ste.

Tutti:

Cum Sancto Spí-ri-tu, in gló-ri- a De- i Pa- tris.

Wñ:

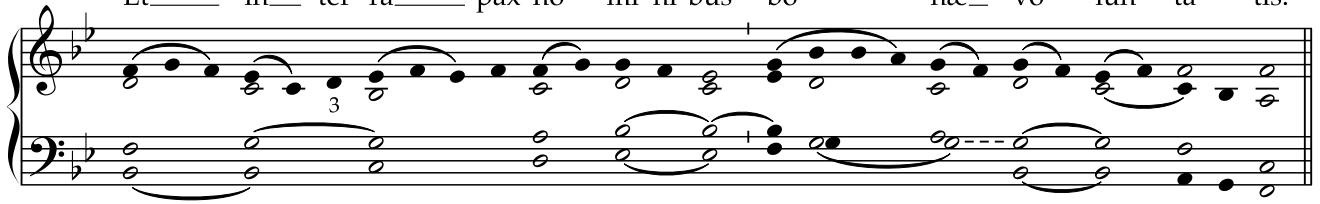
A- men.

Organ accomp.

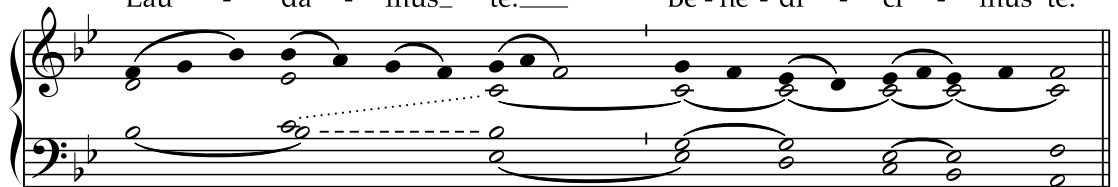


Gló - ri - a in ex-cél - sis De - o.

Et in ter-ra pax ho - mí-ni-bus bo - næ vo - lun - tá - tis.



Lau - dá - mus te. Be - ne - dí - ci - mus te.



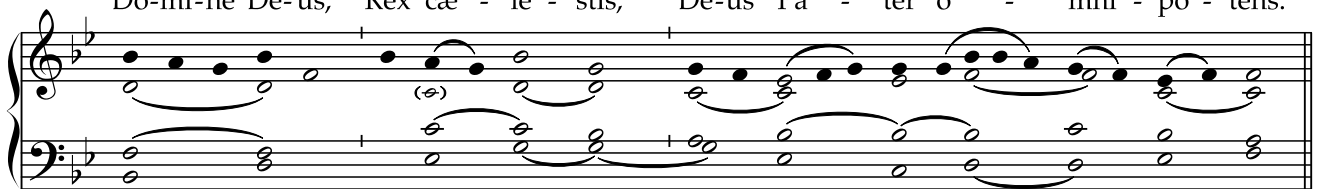
A - do - rá - mus te. Glo - ri - fi - cá - mus te.



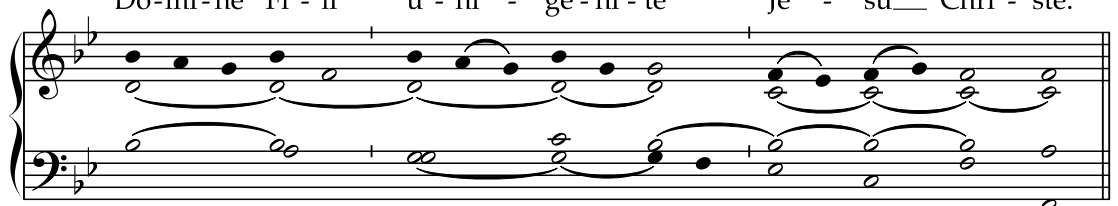
Grá - ti - as á - gi - mus ti - bi pro - pter ma - gnam gló - ri - am tu - am.



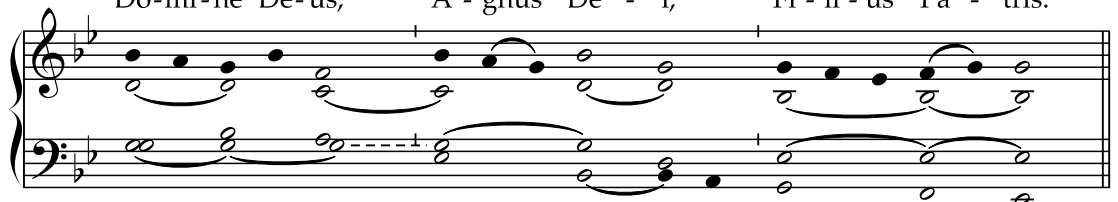
Dó - mi - ne De - us, Rex cæ - lé - stis, De - us Pa - ter o - mní - po - tens.



Dó - mi - ne Fi - li u - ni - gé - ni - te Je - su Chri - ste.



Dó - mi - ne De - us, A - gnus De - i, Fí - li - us Pa - tris.



Polyphony

Quó-ni - am_ tu so-lus san - ctus.

Musical notation for the first phrase. The treble clef contains a melodic line with a long note on 'am' and a slur over 'tu so-lus san - ctus'. The bass clef provides a harmonic accompaniment with chords and moving lines.

Tu so - lus Dó - mi - nus.

Musical notation for the second phrase. The treble clef features a melodic line with a slur over 'so - lus Dó - mi - nus'. The bass clef accompaniment consists of chords and a moving bass line.

Tu so - lus Al - tís - si - mus, Je - su_

Musical notation for the third phrase. The treble clef has a melodic line with a slur over 'Al - tís - si - mus, Je - su_'. The bass clef accompaniment includes chords and a moving bass line.

Chri - ste.

Musical notation for the fourth phrase. The treble clef contains a melodic line with a slur over 'Chri - ste'. The bass clef accompaniment consists of chords and a moving bass line.

Cum San-cto Spí - ri - tu, in gló - ri - a De - i_

Musical notation for the fifth phrase. The treble clef has a melodic line with a slur over 'in gló - ri - a De - i_'. The bass clef accompaniment includes chords and a moving bass line.

Pa - tris.

Musical notation for the sixth phrase. The treble clef contains a melodic line with a slur over 'Pa - tris'. The bass clef accompaniment consists of chords and a moving bass line.

A - - - men.

Musical notation for the seventh phrase. The treble clef has a melodic line with a slur over 'A - - - men'. The bass clef accompaniment includes chords and a moving bass line.