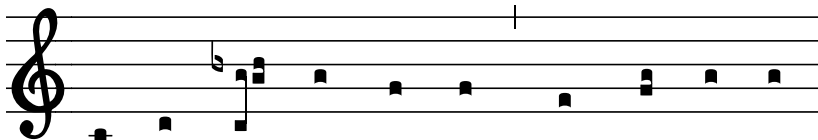


Entrance Chant • 23rd Sunday in Ordinary Time • Years ABC

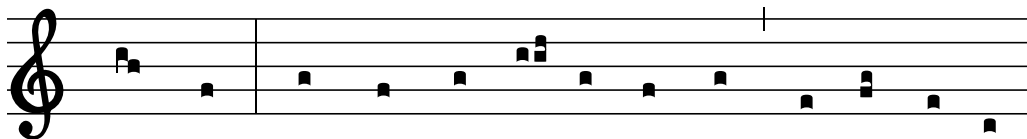
Approved for liturgical use by the Committee on Divine Worship (USCCB).

*Justus es Dñe et
rectum judicium*

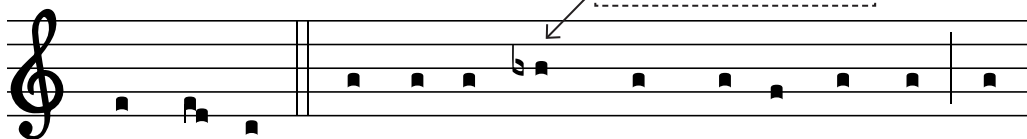
Y



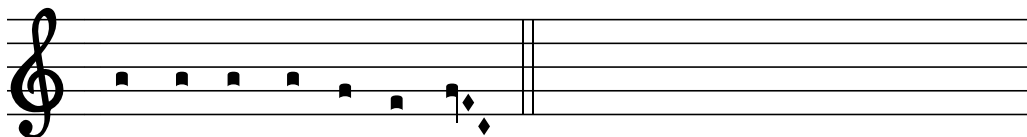
Ou are right-eous, O Lord, and right is your



judgement; deal with this ser-vant of yours ac-cord-ing to



your mer-cy. √. Bless-èd are *those* whose way is blameless, who

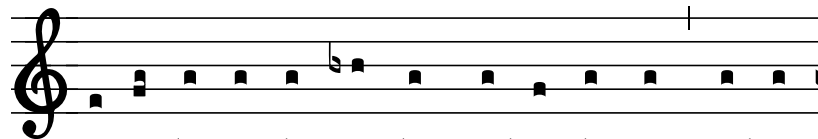


walk in the law *of* the Lord.

*After the word "those," some
singers insert a slight pause.*

Chaumonot 1

G



Lo-ry be to the *Fa*-ther, and to the Son, and to



the *Ho*-ly Spir-it. As it was in the beginning, is *now*, and ev-

