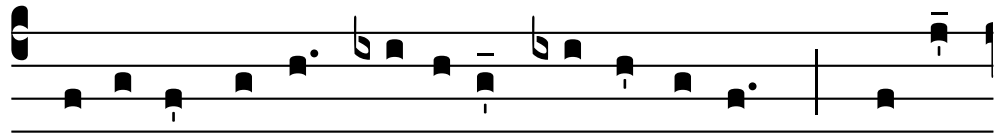


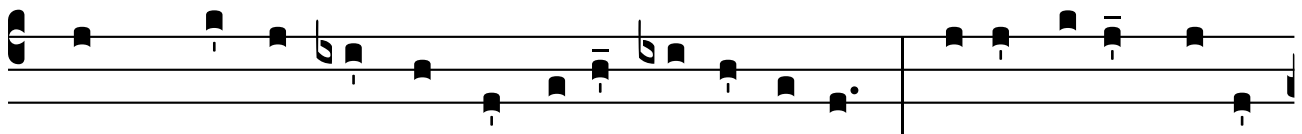
REGINA CAELI LAETARE (Simple)

With the rhythmic markings of Dom Mocquereau:

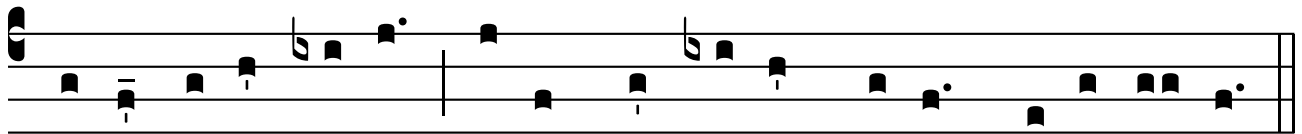
R



Egína cæ-li * lætáre, alle-lú-ia : Qui- a



quem me-ru- í-sti portáre, alle-lú-ia : Resurréxit, sicut



di-xit, alle- lú-ia: Ora pro nobis De-um, alle-lú- ia.