

The following harmonization was composed by Gustaaf Nees (d. 1965)

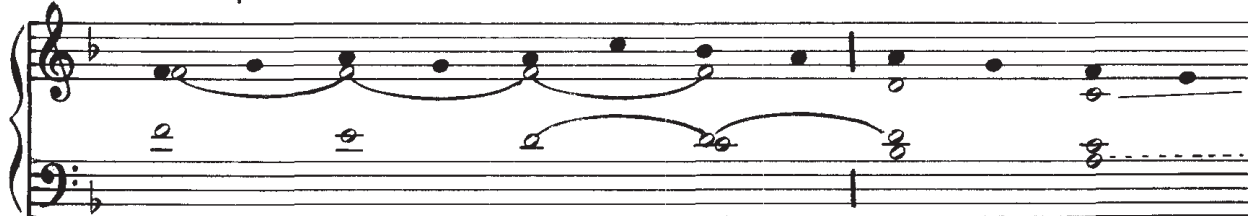
An SATB score has been created, with rehearsal videos for each individual voice.

Visit: <https://ccwatershed.org/polyphony> ...and search for number 90206

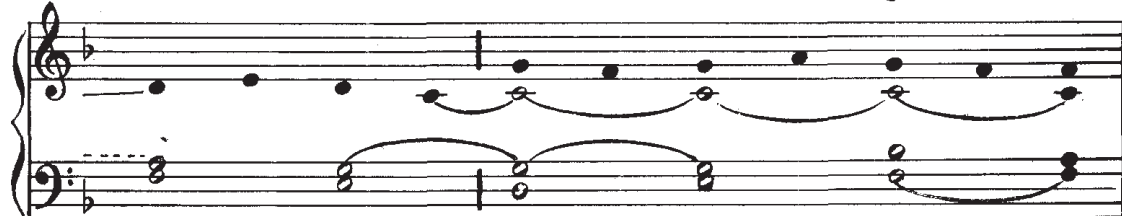
Stabat Mater

VI.

1. Sta - bat Ma - ter do - lo - ró - sa Jux - ta cru - cem
3. O quam tri - stis et af - fli - cta Fu - it il - la



la - cri - mó - sa, Dum pen - dé - bat Fí - li - us.
be - ne - dí - cta Ma - ter U - ni - gé - ni - ti!



2. Cu - jus á - ni - mam ge - mén - tem, Con - tri - stá - tam
4. Quæ mœ - ré - bat et do - lé - bat Pi - a Ma - ter



et do - lén - tem Per - trans - í - vit glá - di - us.
dum vi - dé - bat Na - ti pœ - nas ín - cly - ti.



The Father John Brébeuf Hymnal **“has no parallel and not even any close competitor.”**

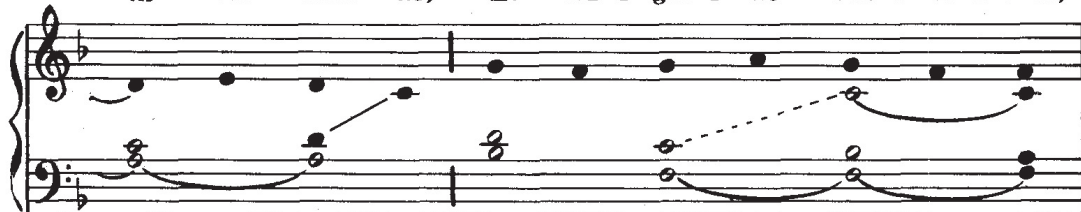
<https://ccwatershed.org/hymn/>

— Author for the Church Music Association of America weblog • 10 June 2022

5. Quis est ho - mo qui non fle - ret, Ma - trem Chri - sti
7. Pro pec - cá - tis su - æ gen - tis, Vi - dit Je - sum



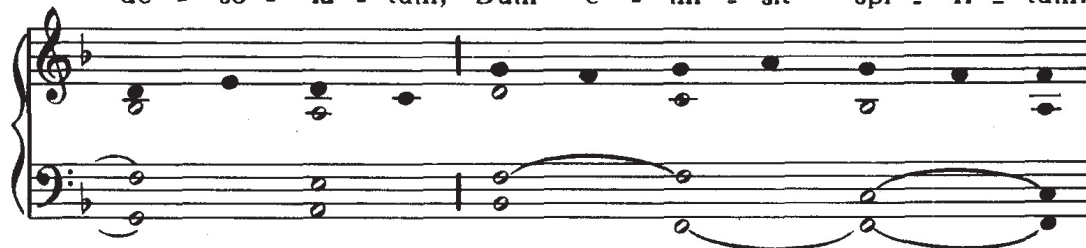
si vi - dé - ret In tan - to sup - plí - ci - o?
in tor - mén - tis, Et fla - gél - lis súb - di - tum,



6. Quis non pos - set con - tri - stá - ri, Chri - sti Ma - trem
8. Vi - dit su - um dul - cem Na - tum Mo - ri - èn - do



con - tem - plá - ri Do - lén - tem cum Fí - li - o?
de - so - lá - tum, Dum e - mí - sit spí - ri - tum.



9. E - ia Ma - ter fons a - mó - ris Me sen - ti - re
 11. San - cta Ma - ter i - stud a - gas, Cru - ci - fi - xi

vim do - ló - ris Fac, ut te - cum lú - ge - am.
 fi - ge pla - gas Cor - di me - o vá - li - de.

10. Fac ut ár - de - at cor me - um In a - mán - do
 12. Tu - i Na - ti vul - ne - rá - ti, Tam di - gná - ti

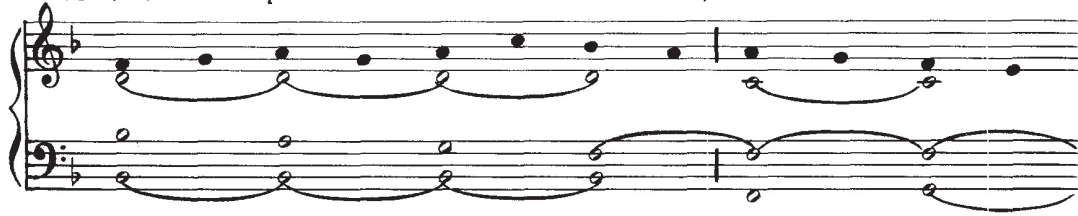
Chri - stum De - um, Ut si - bi com - plá - ce - am.
 pro me pa - ti, Pæ - nas me - cum dí - vi - de.

13. Fac me te - cum pi - e fle - re, Cru - ci - fi - xo
 15. Vir - go ví - gi - num præ - clá - ra, Mi - hi jam non

con - do - lé - re, Do - nec e - go ví - xe - ro.
 sis a - má - ra, Fac me te - cum plán - ge - re.

The Father John Brébeuf Hymnal **“has no parallel and not even any close competitor.”**

14. Jux - ta cru - cem te - cum sta - re, Et me ti - bi
16. Fac ut por - tem Chri - sti mor - tem, Pas - si - ó - nis



so - ci - á - re In plan - ctu de - sí - de - ro.
fac con - sór - tem, Et pla - gas re - có - le - re.



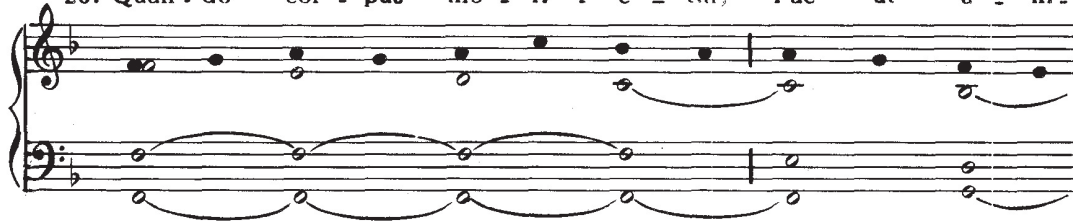
17. Fac me pla - gis vul - ne - rá - ri, Fac me cru - ce in -
19. Chri - ste, cum sit hinc ex - í - re, Da per Ma - trem



e - bri - á - ri, Et cru - ó - re Fí - li - i.
me ve - ní - re Ad pal - mam vi - ctó - ri - æ.



18. Flam - mis ne u - rar suc - cén - sus, Per te Vir - go
20. Quan - do cor - pus mo - ri - é - tur, Fac ut á - ni -



sim de - fén - sus In di - e ju - dí - ci - i.
mæ do - né - tur Pa - ra - dí - si gló - ri - a. A - men.



The Father John Brébeuf Hymnal **“has no parallel and not even any close competitor.”**

<https://ccwatershed.org/hymn/>

— Author for the Church Music Association of America weblog • 10 June 2022