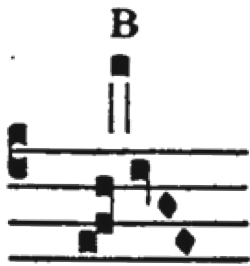


38. The space between the neums at B and D in the example is very distinct in editions with large print. With editions that print the notation too small, many singers hesitate and cannot recognize the **mora vocis**. The space is large enough to admit a **punctum** between. Just imagine two vertical lines as printed below, **or hold your book horizontally at eye-level**, and you will see the space.



Other examples :

Missa de Angelis.



Offert.  
Dom. IV. Adventus.

