



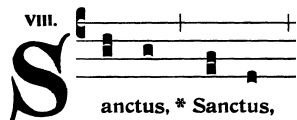
# SANCTUS

By FR. ANTONIN LHOUMEAU (d. 1920)

Based on Sanctus XIII in the "Editio Vaticana,"  
published by the authority of Pope Saint Pius X.

EDITED BY JEFF OSTROWSKI (29 July 2022)

Sanctus XIII as  
found in the 1905  
official edition:



4

S *mf* S R M S L D T L S F S L D T L S  
Sán - ctus, Sán - ctus, Dé - us Sá - ba - oth,

A *pp* S R D D R M S S F M R D R M (M) R M F R  
Sán - ctus, Sán - ctus, Sán - ctus Dó - mi - nus Dé - us Sá - ba - oth,

T *pp* S L L S L F M F S S L T D T L T D L S R D T  
Sán - ctus, Sán - ctus, Sán - ctus Dó - mi - nus Dé - us Sá - ba - oth,

B *mf* S L S M F R L M F F S S S F M R M  
Sán - ctus, Sán - ctus, Sán - ctus Dó - mi - nus Dé - us Sá - ba - oth,

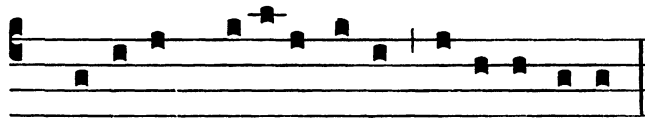
11

S M F M L S L T D R M D R T D L L S S  
Plé - ni sunt caé - li Plé - ni sunt caé - li et tér - ra gló - ri - a tú - a.

A M F M (M) R D M S F S F F R D T  
Plé - ni sunt caé - li et tér - ra gló - ri - a tú - a.

T *pp* M L T D T L S L S D (D) D D L D T D R M L F S R  
Plé - ni sunt caé - li et tér - ra, plé - ni sunt, tér - ra gló - ri - a tú - a.

B M L T D T L S F M L M M F F R M M M R D T L S  
Plé - ni sunt caé - li et tér - ra Plé - ni sunt caé - li et tér - ra gló - ri - a tú - a.



Ple-ni sunt coe-li et terra gló-ri- a tu- a.

Fr Lhoumeau uses various sections from the plainsong.



Ho-sánna in ex-cél-sis.

20

S *mf* Ho - sán - na in ex - cé - l - sis. *mp* Be - ne -

A *mf* Ho - sán - na, Ho - sán - na in ex - cé - l - sis. *mp* Be -

T *mf* Ho - sán - na, Ho - sán - na in ex - cé - l - sis.

B *mf* Ho - sán - na, Ho - sán - na in ex - cé - l - sis.

“There is no finer collection of truly faithful Roman Catholic texts set to elegant melodies (both traditional and new) than the *Saint Jean de Brébeuf Hymnal*. Its choir and accompaniment books are eminently practical for small parish music programs yet worthy of Cathedrals.”

— Archdiocesan & Cathedral Director of Music, BOSTON (July 2022)

32

S dí - ctus qui vé - nit, qui vé - nit in nó - mi - ne Dó - mi - ni.

A ne - dí - ctus qui vé - nit in nó - mi - ne Dó - mi - ni.

T *mp* Be - ne - dí - ctus qui vé - nit Dó - mi - ni.

B *mp* Be - ne - dí - ctus in nó - mi - ne,

**“Hosánna in excélsis” is repeated.**

(see above)