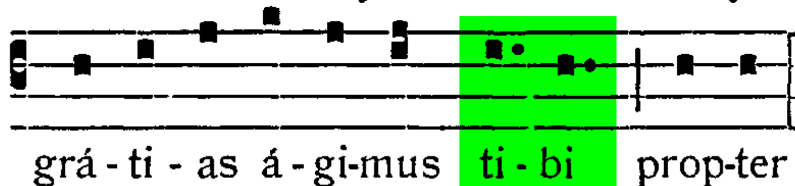


- b) The last two notes are sustained,
- i. When the penultimate syllable bears the accent and there is only one note to a syllable:



(This twofold lengthening is always employed at the *Divisio major*, and as a rule also at the *Divisio minor*. But if used at every *Divisio minima* it would make the singing heavy.)

- o If the last syllable or monosyllable before the pause

For Dom Johner:

Diviso major = Full bar

Divisio minor = Half bar

Divisio minima = Quarter bar