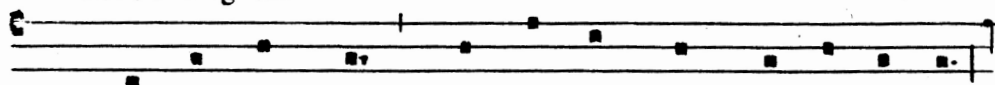


1952 by  
Winfred Douglas  
(Anglican clergyman)

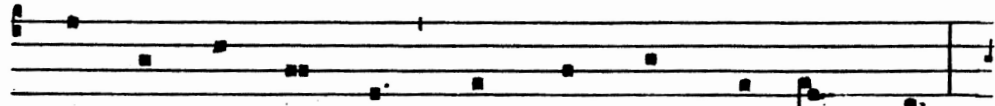
The Simple Melody

Salve Regina

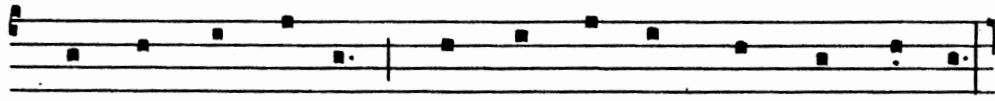
*v*



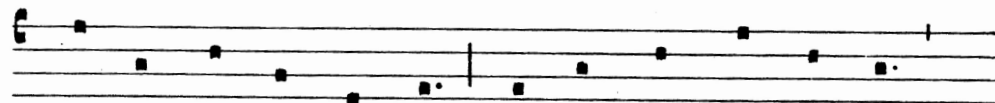
M<sup>a</sup>-ry, we hail thee, † Mother and Queen compassionate;



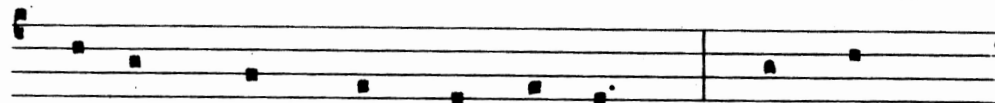
Ma-ry, our com-fort, life, and hope, we hail thee.



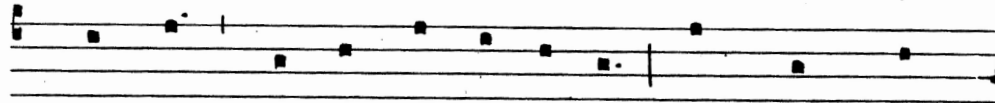
To thee we exiles, children of Eve, lift our crying.



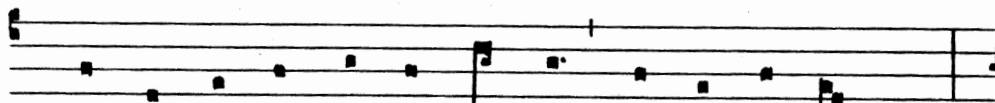
To thee we are sighing, as mournful and weeping,



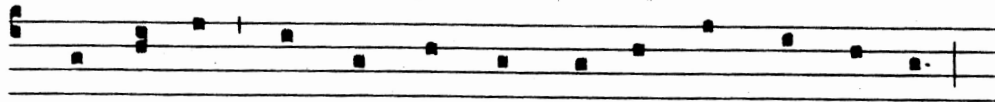
we pass through this vale of sorrow. Turn thou,



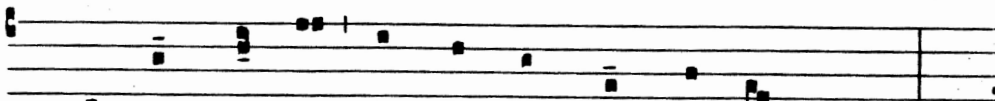
therefore, O our in-tercessor, those thine eyes



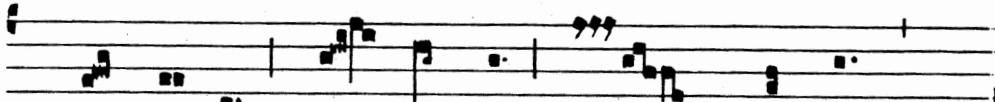
of pi-ty and loving-kindness up-on us sin-ners.



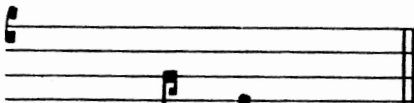
Hereafter, when our earthly exile shall be ended,



shew us Je-sus, the blessed fruit of thy womb.



O gen-tle, O ten-der, O gra-cious



Vir-gin Ma-ry.

*The Saint John Brébeuf Hymnal* "has no parallel and not even any close competitor."

— Author for the *Church Music Association of America* weblog • 10 June 2022