

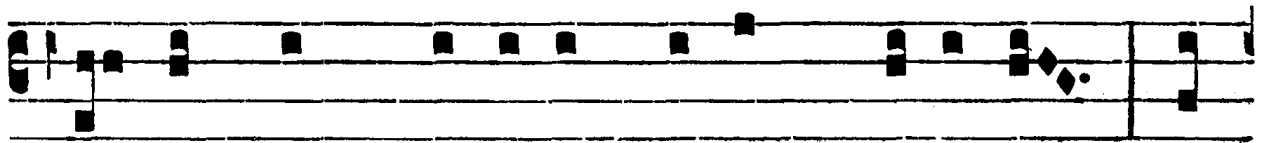
Gradual (Ps 27: 9, 1)

Save your people, O Lord, and bless your inheritance. Vs. Unto you have I cried, O Lord; O my God, be not silent with me, lest I become like those who go down into the grave.

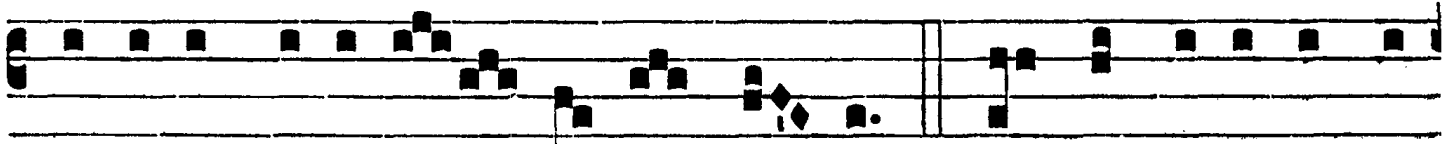
Grad.

7.

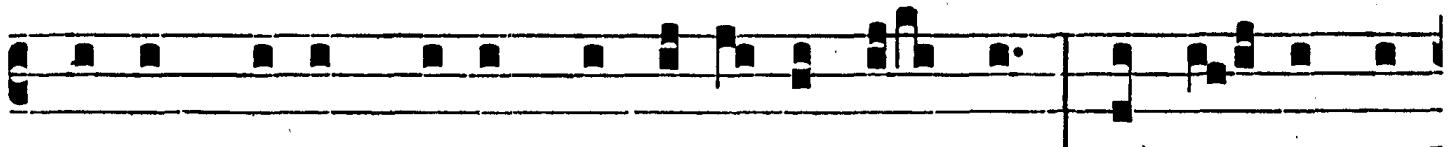
S



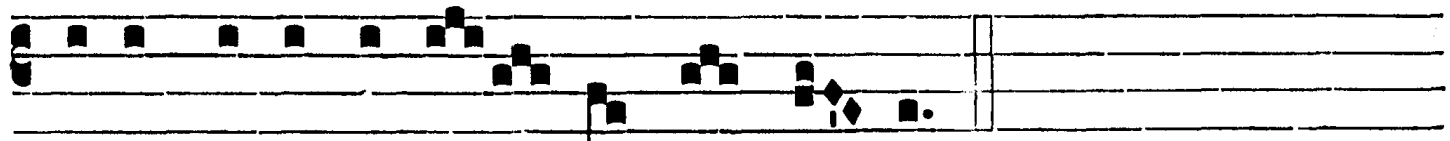
Al-vum fac * pó-pu-lum tú- um, Dómi-ne : et



bé-ne-dic he-re-di- tá- ti tú- ae. V. Ad te Dómi-ne cla-



má-vi : Dé- us mé- us, ne sí- le- as a me, et é- ro sí-

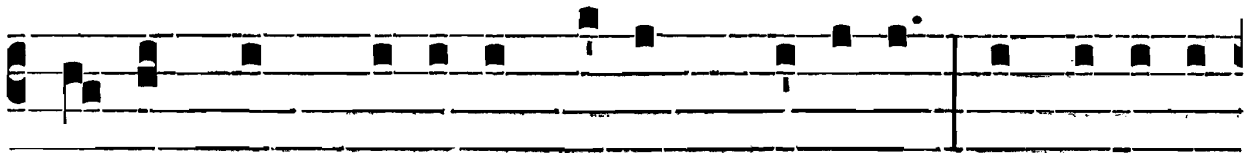


mi- lis descendéti- bus in lá- cum.

Gradual (Ps 27: 9, 1)

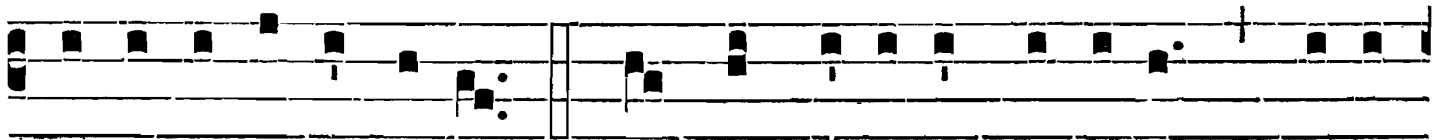
Save your people, O Lord, and bless your inheritance. Vs. Unto you have I cried, O Lord; O my God, be not silent with me, lest I become like those who go down into the grave.

Grad.
VII

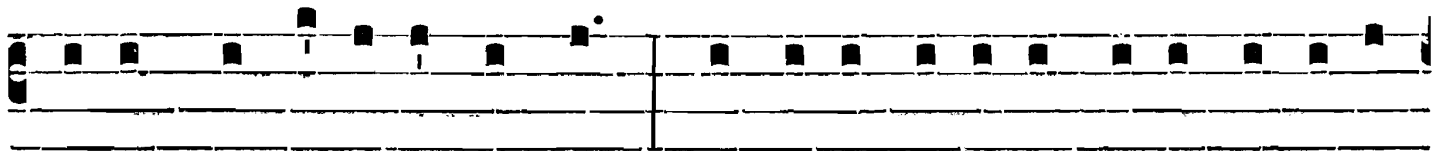


S

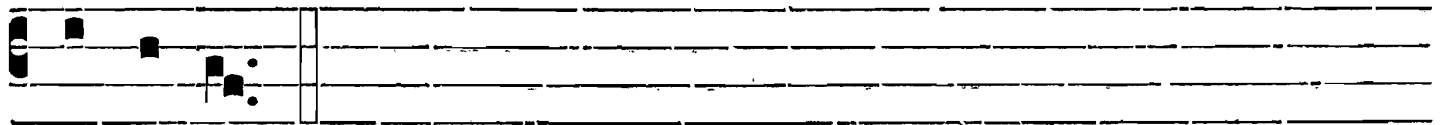
Alvum fac * pópu-lum tú- um, Dómi-ne : et béne-dic



he-re-di-tá-ti tú-ae. V̄. Ad te, Dómi-ne, clamá-vi : Dé- us



mé- us, ne sí-le- as a me, et é-ro sími- lis descendéntibus



in lá-cum.

Gradual (Ps 27: 9, 1)

Save your people, O Lord, and bless your inheritance. Vs. Unto you have I cried, O Lord; O my God, be not silent with me, lest I become like those who go down into the grave.

VII

S Al- vum fac * pó-pu- lum tu- um,

Dó- mi- ne: et bé- ne-

dic he-re-di-tá- ti

tu- æ. γ. Ad te

Dómine clamá-vi: De- us me- us, ne sí-le- as a me, et

e-ro sí-mi-lis descendé-nti- bus in la- cum.

The image shows a musical score for a Gradual, consisting of seven systems of music. Each system includes a vocal line with lyrics and a corresponding piano accompaniment line. The lyrics are: "Al- vum fac * pó-pu- lum tu- um, Dó- mi- ne: et bé- ne- dic he-re-di-tá- ti tu- æ. γ. Ad te Dómine clamá-vi: De- us me- us, ne sí-le- as a me, et e-ro sí-mi-lis descendé-nti- bus in la- cum." The score is written in a standard musical notation with a treble clef and a common time signature. The lyrics are placed below the vocal line, and the piano accompaniment is written on a separate staff below the vocal line. The score is divided into measures by vertical bar lines. The first system starts with a large 'S' and a 'VII' above it. The second system has a colon after 'Dó- mi- ne:'. The third system has a period after 'tu-'. The fourth system has a period after 'æ.' and a Greek letter gamma 'γ.' after 'Ad te'. The fifth system has a colon after 'Dómine clamá-vi:'. The sixth system has a period after 'e-ro sí-mi-lis descendé-nti- bus'. The seventh system ends with a double bar line.