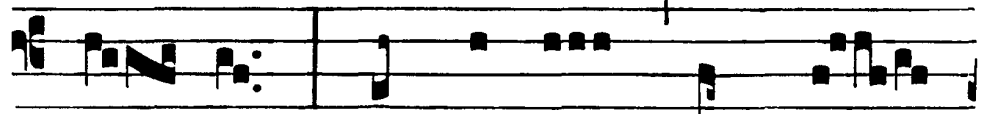


II

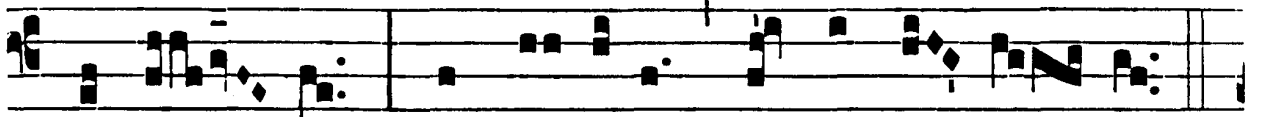
E



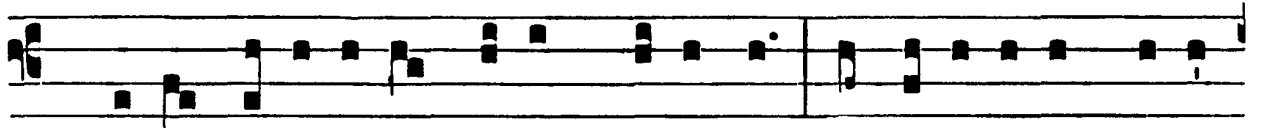
C-CE * advé- nit domi- ná- tor Dó-



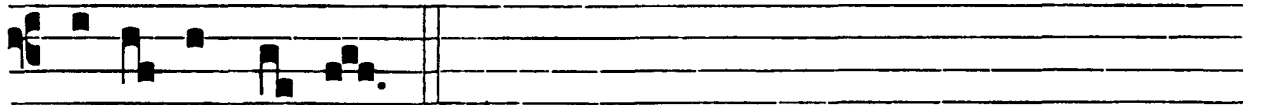
mi- nus : et regnum in ma-



nu e- ius, et pot- éstas, et impé- ri- um.



Ps. De- us, iu- dí- ci- um tu- um re- gi da: et iustí- ti- am tu- am.



fí- li- o re- gis.

Translation

Behold, the Sovereign Lord is coming; kingship, government and power are in his hands. Endow the King with your judgment, O God, and the King's son with your righteousness.



Ló- ri- a Patri, et Fí- li- o, et Spi- rí- tu- i Sancto. Sic- ut e- rat in princí- pi- o,



et nunc, et semper, et in sæcu- la sæcu- ló- rum. Amen.

