

4450 :: Organist Score :: Jeff Ostrowski (2008)

<http://www.corpuschristiwatershed.org/>

FEAST of ALL SAINTS • November 1st •



• Year A, B, & C •

# LEMMENS REFRAIN

*Lower Key*

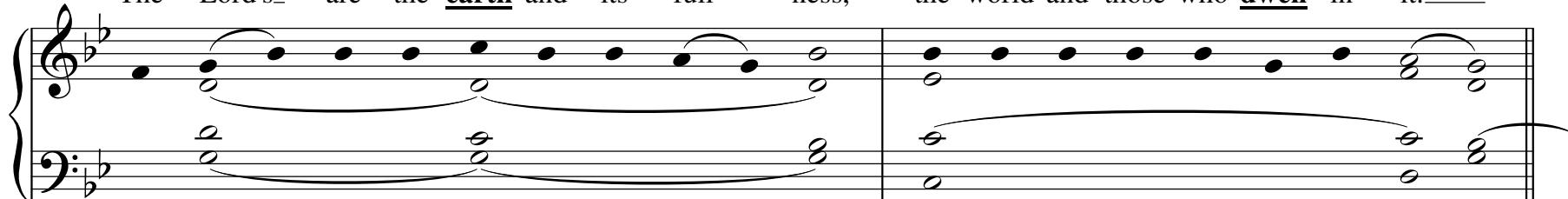
**R.**

Lord, this is the peo - ple that longs to see Your face.

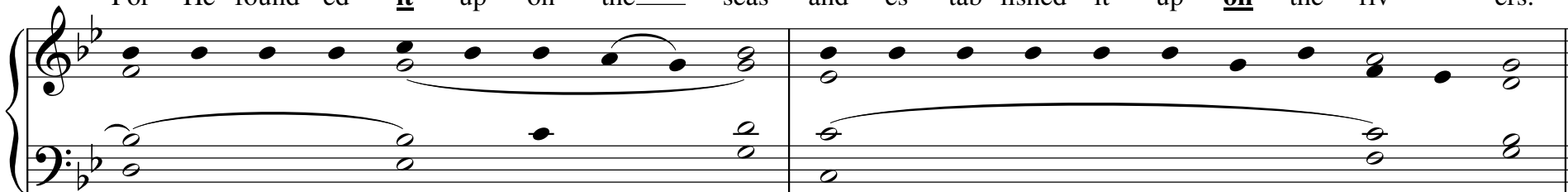


The Lord's\_ are the earth and its full - ness, the world and those who dwell in it.\_\_\_\_

**1**



For He found - ed it up - on the\_\_\_\_ seas and es - tab - lished it up - on the riv - ers.



2

Who can\_\_\_ as - cend the moun-tain of the Lord? Or who may stand in His ho - ly place?

Musical notation for the first system, featuring a treble and bass staff with a piano accompaniment and a vocal line. The key signature is one flat (B-flat), and the time signature is 4/4. The piano accompaniment consists of a simple harmonic progression in the bass line and a more active line in the treble line. The vocal line is written in the treble clef and follows the lyrics.

One whose hands are sin - less, whose heart\_\_\_ is\_\_\_ clean, who de - sires not what is vain.---

Musical notation for the second system, featuring a treble and bass staff with a piano accompaniment and a vocal line. The key signature is one flat (B-flat), and the time signature is 4/4. The piano accompaniment continues with a simple harmonic progression. The vocal line is written in the treble clef and follows the lyrics.

He shall\_\_\_ re - ceive a bles-sing from the Lord, a re - ward from God his sav - ior.

3

Musical notation for the third system, featuring a treble and bass staff with a piano accompaniment and a vocal line. The key signature is one flat (B-flat), and the time signature is 4/4. The piano accompaniment continues with a simple harmonic progression. The vocal line is written in the treble clef and follows the lyrics.

Such is the race that seeks\_\_\_ for\_\_\_ Him, that seeks the Face of the God of Ja - cob.

Musical notation for the fourth system, featuring a treble and bass staff with a piano accompaniment and a vocal line. The key signature is one flat (B-flat), and the time signature is 4/4. The piano accompaniment continues with a simple harmonic progression. The vocal line is written in the treble clef and follows the lyrics.