

PRESENTATION OF THE LORD

Ps. 24: 7, 8, 9, 10

(L 524)

ANTIPHON

Who is_ this king_ of glo- ry? It is_ the Lord!

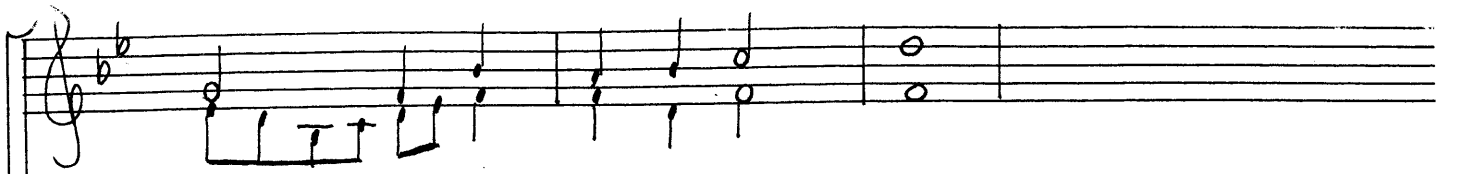
The first system consists of a vocal line on a single staff and a piano accompaniment on a grand staff (treble and bass clefs). The key signature has two flats (B-flat and E-flat), and the time signature is 4/4. The vocal line begins with a quarter rest followed by a series of eighth and quarter notes. The piano accompaniment features a steady eighth-note bass line and chords in the right hand.

1, 3. Lift up, O gates, your lin- tels; reach up, you ancient portals,

The second system continues with the vocal line and piano accompaniment. The vocal line has a quarter rest followed by a half note, then a quarter note, and a half note. The piano accompaniment includes a triplet of eighth notes in the right hand and a half note in the left hand.

1, 3. that the king of glo- ry may come in. Ant.

The third system concludes the antiphon. The vocal line has a quarter rest followed by a half note, a quarter note, and a half note. The piano accompaniment features a half note in the right hand and a half note in the left hand.



2,4. Who _____ is this king of glo - ry?



SOPRANO only { 2. Lord, _____ migh - ty in bat - tle. Ant.



2. The Lord, strong and mighty, the Lord, migh - ty _____ in bat - tle. Ant.
4. The Lord of hosts; _____ he _____ is the king _____ of glo - ry. Ant.

