

3rd SUNDAY of ADVENT

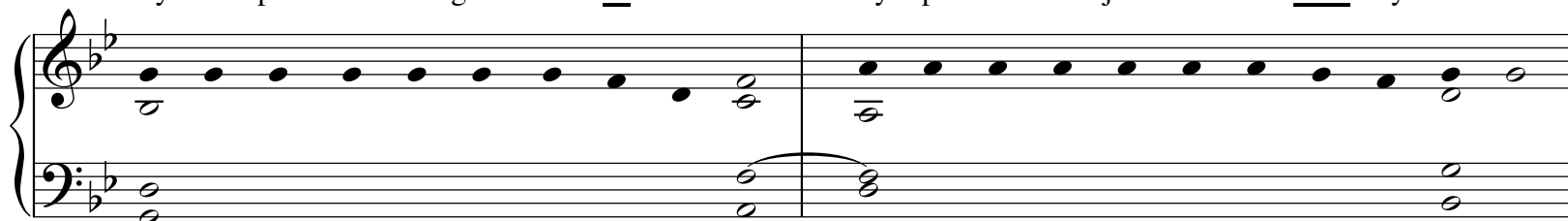
• Year B •

<http://www.corpuschristiwatershed.org/>

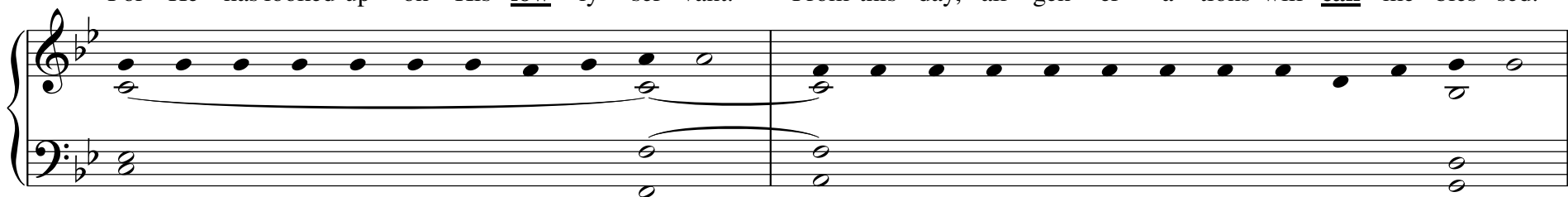


My soul pro-claims the great-ness of the Lord. My spir - it re - joic - es in God my Sav - ior.

1



For He has looked up - on His low - ly ser - vant. From this day, all gen - er - a - tions will call me bles - sed.



The Al - might - y has done great **THINGS** for me, and ho - ly **is** His Name.

2

Musical notation for the second measure of the first line. It consists of a grand staff with a treble clef and a bass clef. The key signature has two flats (B-flat and E-flat). The melody in the treble clef consists of a sequence of eighth notes: G4, A4, B4, C5, B4, A4, G4, F4, E4, D4. The bass line consists of a sequence of chords: G3-B2, G3-B2, G3-B2, G3-B2, G3-B2, G3-B2, G3-B2, G3-B2, G3-B2, G3-B2.

He has mer - cy on those **who** fear Him in ev - 'ry **GEN** - er - a - tion.

Musical notation for the second line. It consists of a grand staff with a treble clef and a bass clef. The key signature has two flats. The melody in the treble clef consists of a sequence of eighth notes: G4, A4, B4, C5, B4, A4, G4, F4, E4, D4. The bass line consists of a sequence of chords: G3-B2, G3-B2, G3-B2, G3-B2, G3-B2, G3-B2, G3-B2, G3-B2, G3-B2, G3-B2.

He has filled the hun - gry **with** good things, and the rich He has sent **a** - way emp - ty.

3

Musical notation for the third measure of the first line. It consists of a grand staff with a treble clef and a bass clef. The key signature has two flats. The melody in the treble clef consists of a sequence of eighth notes: G4, A4, B4, C5, B4, A4, G4, F4, E4, D4. The bass line consists of a sequence of chords: G3-B2, G3-B2, G3-B2, G3-B2, G3-B2, G3-B2, G3-B2, G3-B2, G3-B2, G3-B2.

He has come to the help of His ser - vant **Is** - ra - ël, for He has re - mem - bered His pro - **mise** of mer - cy.

Musical notation for the fourth line. It consists of a grand staff with a treble clef and a bass clef. The key signature has two flats. The melody in the treble clef consists of a sequence of eighth notes: G4, A4, B4, C5, B4, A4, G4, F4, E4, D4. The bass line consists of a sequence of chords: G3-B2, G3-B2, G3-B2, G3-B2, G3-B2, G3-B2, G3-B2, G3-B2, G3-B2, G3-B2.