

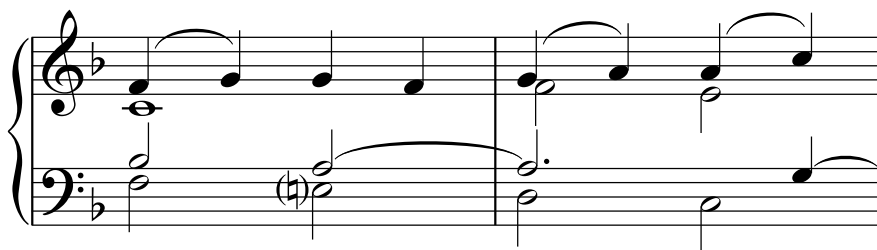
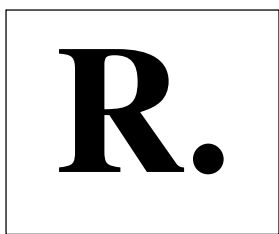
FEAST of the MOST HOLY BODY and BLOOD of CHRIST



• Year C •

<http://www.corpuschristiwatershed.org/>

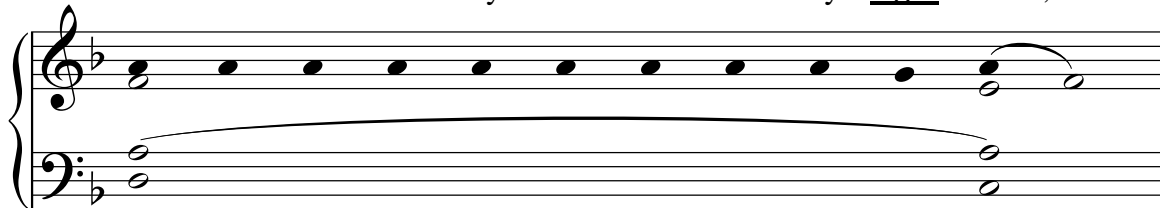
You are a priest for



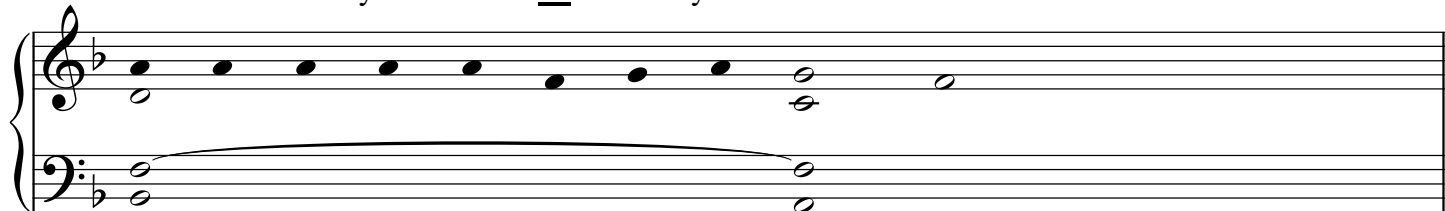
-ev - er in the line of Mel - chi - ze - dek.



The Lord said to my Lord sit at my right hand,

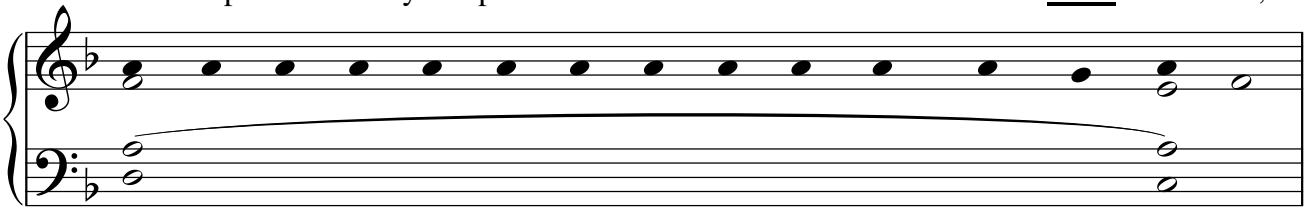


till I make your e - ne - mies your foot - stool.



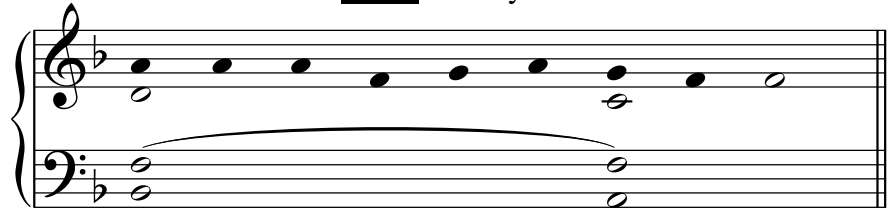
The scep - tor of your pow - er the Lord will stretch forth from Zi - on,

2



Musical notation for section 2, featuring a treble and bass staff with a grand staff brace. The melody is written in a single line on the treble staff, and the bass line is written in a single line on the bass staff. The key signature has one flat (Bb) and the time signature is 2/4. The melody consists of a series of eighth notes, with a final quarter note. The bass line consists of a single half note chord.

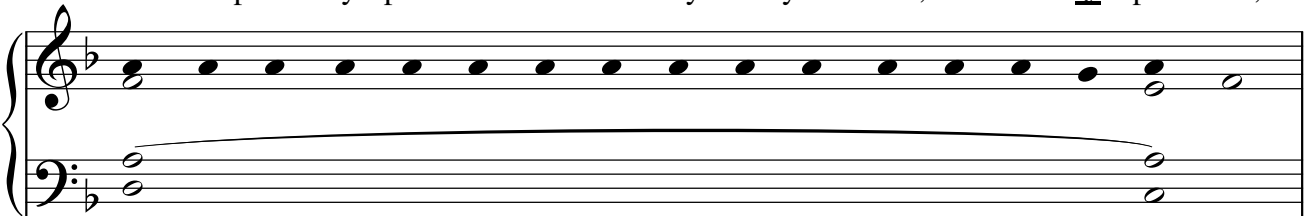
Rule in the midst of your e - ne - mies.



Musical notation for section 2, featuring a treble and bass staff with a grand staff brace. The melody is written in a single line on the treble staff, and the bass line is written in a single line on the bass staff. The key signature has one flat (Bb) and the time signature is 2/4. The melody consists of a series of eighth notes, with a final quarter note. The bass line consists of a single half note chord.

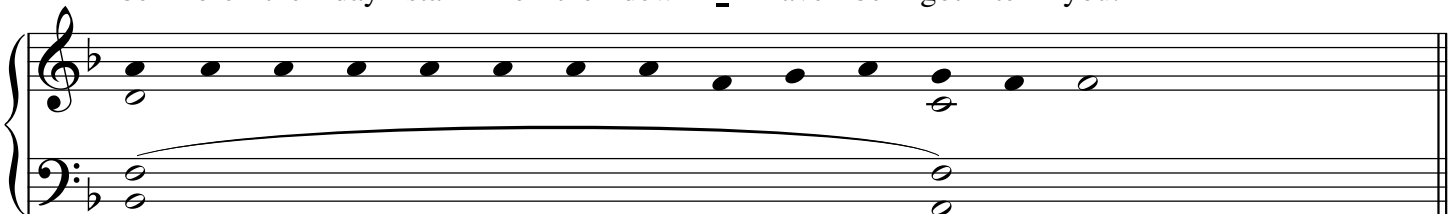
Yours is prince - ly pow - er in the day of your birth, in ho - ly splen - dor,

3



Musical notation for section 3, featuring a treble and bass staff with a grand staff brace. The melody is written in a single line on the treble staff, and the bass line is written in a single line on the bass staff. The key signature has one flat (Bb) and the time signature is 2/4. The melody consists of a series of eighth notes, with a final quarter note. The bass line consists of a single half note chord.

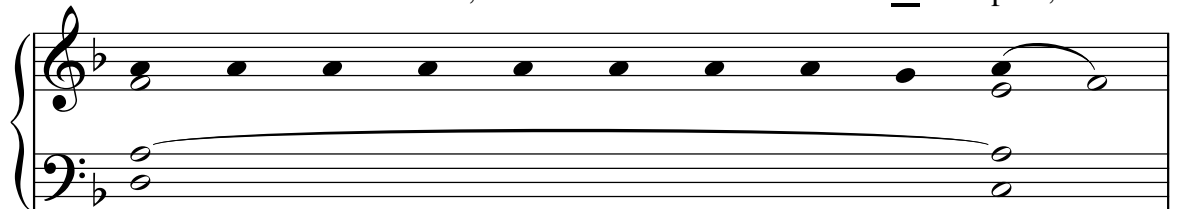
be - fore the day - star like the dew I have be - got - ten you.



Musical notation for section 3, featuring a treble and bass staff with a grand staff brace. The melody is written in a single line on the treble staff, and the bass line is written in a single line on the bass staff. The key signature has one flat (Bb) and the time signature is 2/4. The melody consists of a series of eighth notes, with a final quarter note. The bass line consists of a single half note chord.

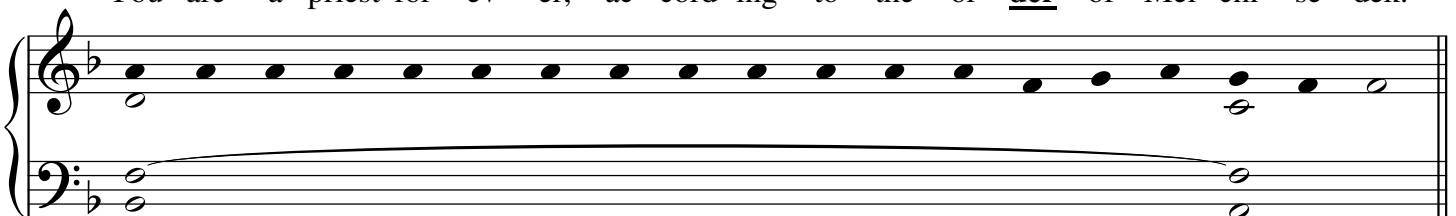
The Lord has sworn, and He will not re - pent, —

4



Musical notation for section 4, featuring a treble and bass staff with a grand staff brace. The melody is written in a single line on the treble staff, and the bass line is written in a single line on the bass staff. The key signature has one flat (Bb) and the time signature is 2/4. The melody consists of a series of eighth notes, with a final quarter note. The bass line consists of a single half note chord.

You are a priest for - ev - er, ac - cord - ing to the or - der of Mel - chi - se - dek.



Musical notation for section 4, featuring a treble and bass staff with a grand staff brace. The melody is written in a single line on the treble staff, and the bass line is written in a single line on the bass staff. The key signature has one flat (Bb) and the time signature is 2/4. The melody consists of a series of eighth notes, with a final quarter note. The bass line consists of a single half note chord.