

2501 :: Organist Score :: Jeff Ostrowski (2007)

<http://www.corpuschristiwatershed.org/>

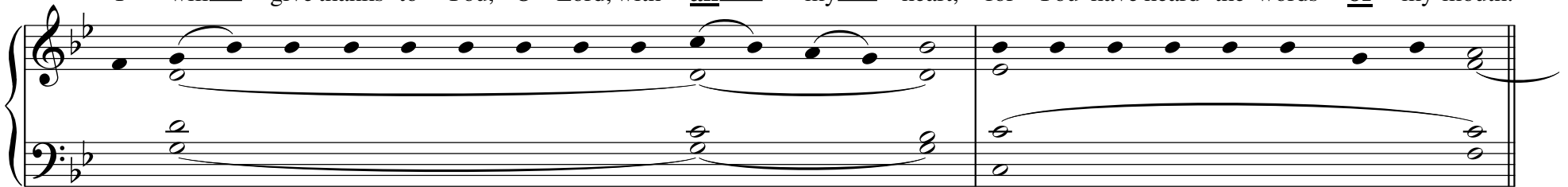
• Year A •

21st SUNDAY in
ORDINARY TIME

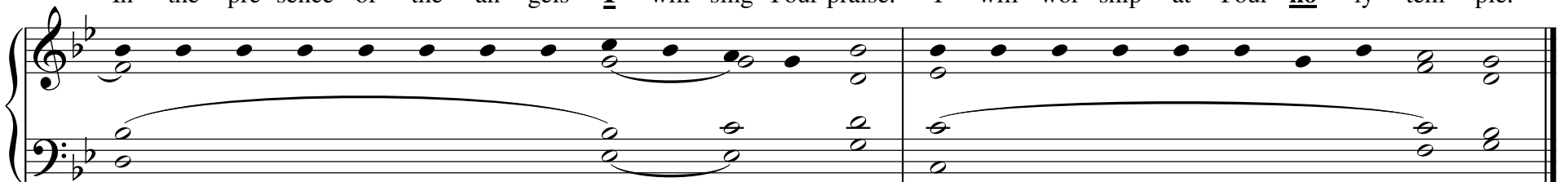


Psalm Verse #1

I will give thanks to You, O Lord, with all my heart, for You have heard the words of my mouth.



In the pre-sence of the an-gels I will sing Your praise. I will wor-ship at Your ho-ly tem-ple.



2

I will give thanks to Your name, be - cause of Your kind - ness and Your truth.

Musical notation for the second system, featuring a treble and bass clef with a piano accompaniment. The melody is written in the treble clef, and the piano accompaniment is in the bass clef. The key signature has two flats (B-flat and E-flat), and the time signature is 4/4. The melody consists of quarter notes with a slur over the first two measures and another slur over the last two measures. The piano accompaniment consists of half notes with a slur over the first two measures and another slur over the last two measures.

When I called, You an - swered me. You built up strength with - in me.

Musical notation for the second system, featuring a treble and bass clef with a piano accompaniment. The melody is written in the treble clef, and the piano accompaniment is in the bass clef. The key signature has two flats (B-flat and E-flat), and the time signature is 4/4. The melody consists of quarter notes with a slur over the first two measures and another slur over the last two measures. The piano accompaniment consists of half notes with a slur over the first two measures and another slur over the last two measures.

3

The Lord is ex - alt - ed, yet the low - ly He sees. and the proud He knows from a - far.

Musical notation for the third system, featuring a treble and bass clef with a piano accompaniment. The melody is written in the treble clef, and the piano accompaniment is in the bass clef. The key signature has two flats (B-flat and E-flat), and the time signature is 4/4. The melody consists of quarter notes with a slur over the first two measures and another slur over the last two measures. The piano accompaniment consists of half notes with a slur over the first two measures and another slur over the last two measures.

Your kind - ness, O Lord, en - dures for - ev - er. For - sake not the work of Your hands.

Musical notation for the third system, featuring a treble and bass clef with a piano accompaniment. The melody is written in the treble clef, and the piano accompaniment is in the bass clef. The key signature has two flats (B-flat and E-flat), and the time signature is 4/4. The melody consists of quarter notes with a slur over the first two measures and another slur over the last two measures. The piano accompaniment consists of half notes with a slur over the first two measures and another slur over the last two measures.