

\*\*\* LOWER KEY • Year A •

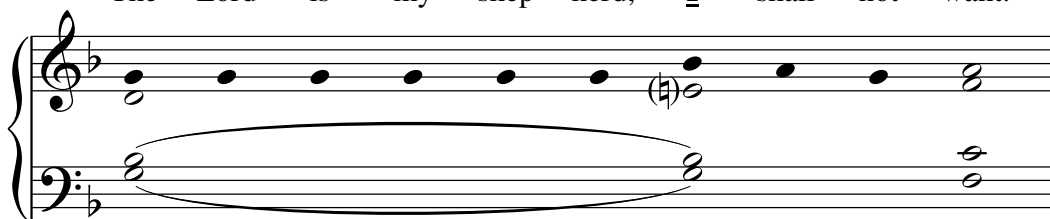
<http://www.corpuschristiwatershed.org/>

# 28th SUNDAY in ORDINARY TIME

## In honor of Pope Innocent II

The Lord is my shep - herd, **I** shall not want.

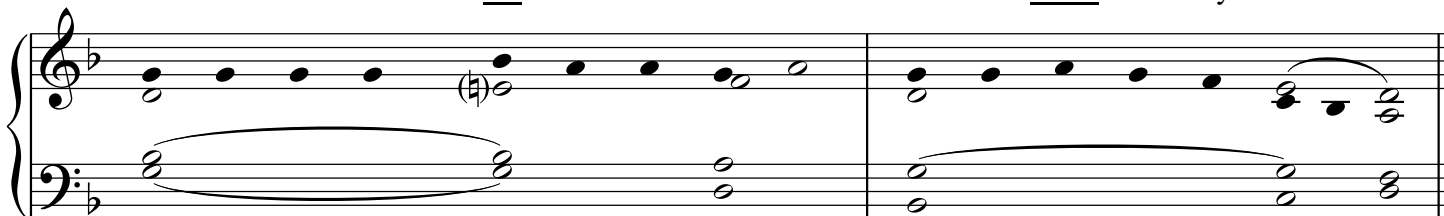
1



In ver - dant pas - tures He gives me re - pose.\_\_\_\_\_



be - side rest - ful wa - ters He leads me. He re - fresh - es my soul.\_\_\_\_\_

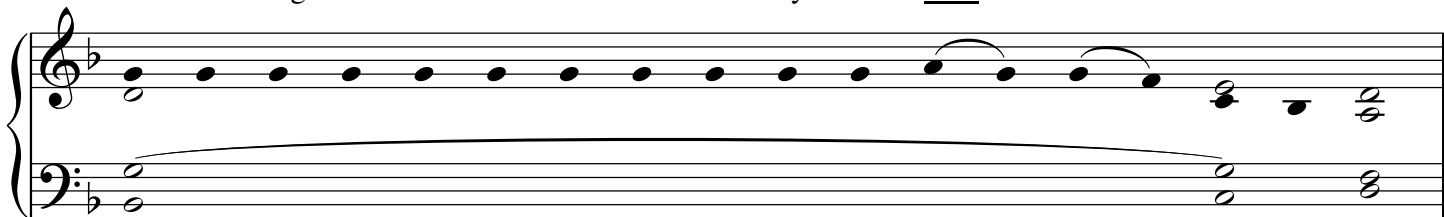


He guides me in right paths for His name's sake.

2



Ev - en though I walk in the dark val - ley I fear no e - vil.



For You are at my side with Your **rod** and Your staff, that **give** me cour - age.

Musical notation for the first verse of the 3rd Psalm. It consists of two staves: a treble clef staff and a bass clef staff. The treble staff contains a melody of quarter notes, with a sharp sign above the fifth note. The bass staff contains a simple accompaniment of quarter notes. The music is divided into two measures by a vertical bar line.

## 3rd Psalm Verse

You spread a **ta** - ble be - fore me, in the **sight** of my foes.

Musical notation for the second verse of the 3rd Psalm. It consists of two staves: a treble clef staff and a bass clef staff. The treble staff contains a melody of quarter notes, with a sharp sign above the fifth note. The bass staff contains a simple accompaniment of quarter notes. The music is divided into two measures by a vertical bar line.

You a - noint my **head** with oil, my **cup** ov - er - flows.

Musical notation for the third verse of the 3rd Psalm. It consists of two staves: a treble clef staff and a bass clef staff. The treble staff contains a melody of quarter notes, with a sharp sign above the fifth note. The bass staff contains a simple accompaniment of quarter notes. The music is divided into two measures by a vertical bar line.

## 4th Psalm Verse

On - ly good-ness and **kind**-ness fol - low me, all the **days** of my life.

Musical notation for the first verse of the 4th Psalm. It consists of two staves: a treble clef staff and a bass clef staff. The treble staff contains a melody of quarter notes, with a sharp sign above the fifth note. The bass staff contains a simple accompaniment of quarter notes. The music is divided into two measures by a vertical bar line.

and I shall dwell in the **house** of the Lord, for **years** to come.

Musical notation for the second verse of the 4th Psalm. It consists of two staves: a treble clef staff and a bass clef staff. The treble staff contains a melody of quarter notes, with a sharp sign above the fifth note. The bass staff contains a simple accompaniment of quarter notes. The music is divided into two measures by a vertical bar line.