

2272 : : Organist Score : : Jeff Ostrowski (2007)

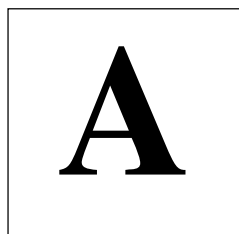
<http://www.corpuschristiwatershed.org/>

Alternate Harmonizations of the REFRAIN



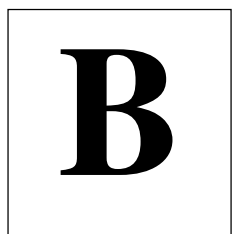
DOMINUS PARS HEREDITATIS MEAE
ET CALICIS MEI TU POSSESSOR SORTIS MEAE

You are my in - her - it - ance, O Lord.



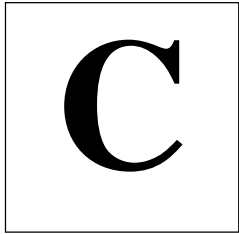
Musical notation for alternate harmonization A. The score is in G minor (one flat) and 4/4 time. The melody is in the treble clef, and the accompaniment is in the bass clef. The melody consists of a quarter note G4, a quarter note A4, a quarter note Bb4, and a quarter note C5. The accompaniment consists of a half note G3, a half note Bb3, and a half note C4. The piece ends with a double bar line.

You are my in - her - it - ance, O Lord.



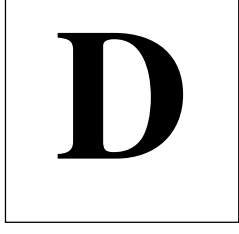
Musical notation for alternate harmonization B. The score is in G minor (one flat) and 4/4 time. The melody is in the treble clef, and the accompaniment is in the bass clef. The melody consists of a quarter note G4, a quarter note A4, a quarter note Bb4, and a quarter note C5. The accompaniment consists of a half note G3, a half note Bb3, and a half note C4. The piece ends with a double bar line.

You are my in - her - it - ance, O Lord.



Musical notation for alternate harmonization C. The score is in G minor (one flat) and 4/4 time. The melody is in the treble clef, and the accompaniment is in the bass clef. The melody consists of a quarter note G4, a quarter note A4, a quarter note Bb4, and a quarter note C5. The accompaniment consists of a half note G3, a half note Bb3, and a half note C4. The piece ends with a double bar line.

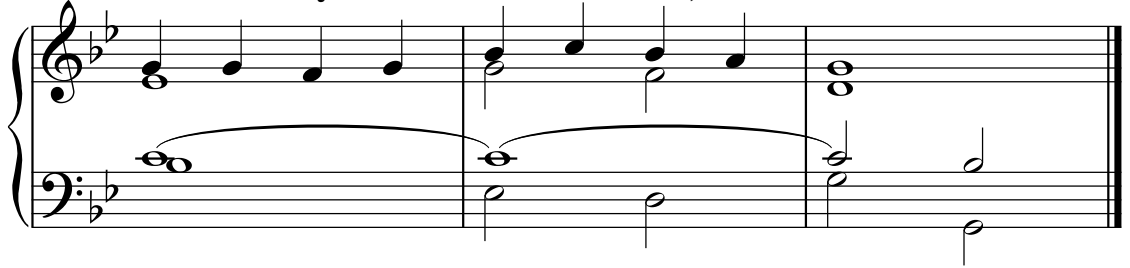
You are my in - her - it - ance, O Lord.



Musical notation for alternate harmonization D. The score is in G minor (one flat) and 4/4 time. The melody is in the treble clef, and the accompaniment is in the bass clef. The melody consists of a quarter note G4, a quarter note A4, a quarter note Bb4, and a quarter note C5. The accompaniment consists of a half note G3, a half note Bb3, and a half note C4. The piece ends with a double bar line.

E

You are my in - her - it - ance, O Lord.



Musical notation for exercise E, featuring a treble and bass clef with a key signature of two flats. The melody is in the treble clef, and the accompaniment is in the bass clef. The piece consists of three measures. The first measure has a half note G4 in the treble and a half note E3 in the bass. The second measure has a half note A4 in the treble and a half note F3 in the bass. The third measure has a half note B4 in the treble and a half note G3 in the bass. A slur covers the bass line across all three measures.

F


You are my in - her - it - ance, O Lord.



Musical notation for exercise F, featuring a treble and bass clef with a key signature of two flats. The melody is in the treble clef, and the accompaniment is in the bass clef. The piece consists of three measures. The first measure has a half note G4 in the treble and a half note E3 in the bass. The second measure has a half note A4 in the treble and a half note F3 in the bass. The third measure has a half note B4 in the treble and a half note G3 in the bass. A slur covers the bass line across all three measures.

G

You are my in - her - it - ance, O Lord.



Musical notation for exercise G, featuring a treble and bass clef with a key signature of two flats. The melody is in the treble clef, and the accompaniment is in the bass clef. The piece consists of three measures. The first measure has a half note G4 in the treble and a half note E3 in the bass. The second measure has a half note A4 in the treble and a half note F3 in the bass. The third measure has a half note B4 in the treble and a half note G3 in the bass. A slur covers the bass line across all three measures.

H

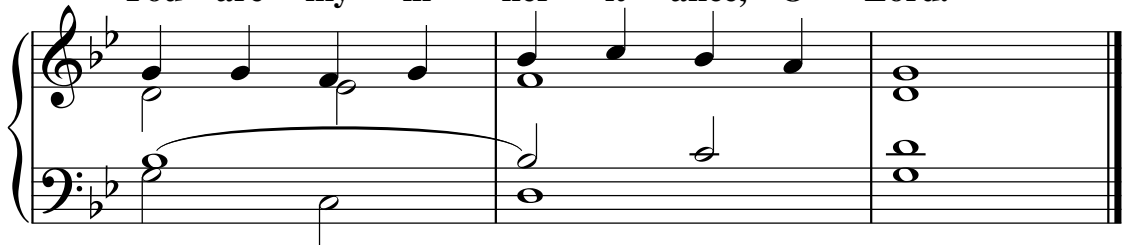
You are my in - her - it - ance, O Lord.



Musical notation for exercise H, featuring a treble and bass clef with a key signature of two flats. The melody is in the treble clef, and the accompaniment is in the bass clef. The piece consists of three measures. The first measure has a half note G4 in the treble and a half note E3 in the bass. The second measure has a half note A4 in the treble and a half note F3 in the bass. The third measure has a half note B4 in the treble and a half note G3 in the bass. A slur covers the bass line across all three measures.

I

You are my in - her - it - ance, O Lord.



Musical notation for exercise I, featuring a treble and bass clef with a key signature of two flats. The melody is in the treble clef, and the accompaniment is in the bass clef. The piece consists of three measures. The first measure has a half note G4 in the treble and a half note E3 in the bass. The second measure has a half note A4 in the treble and a half note F3 in the bass. The third measure has a half note B4 in the treble and a half note G3 in the bass. A slur covers the bass line across all three measures.