

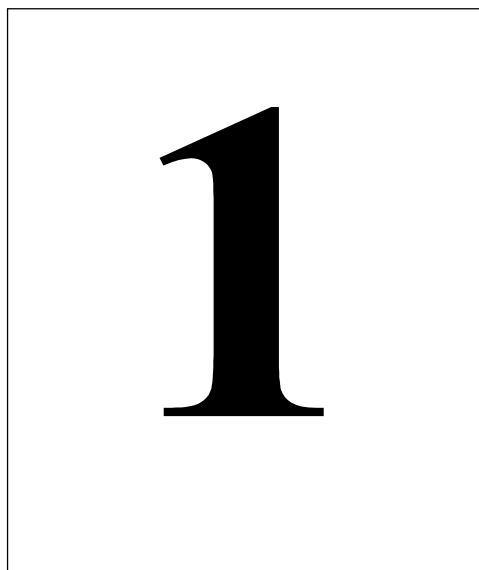
1831 :: Organist Score :: Jeff Ostrowski (2007)

• Year A •

FEAST of the MOST HOLY TRINITY



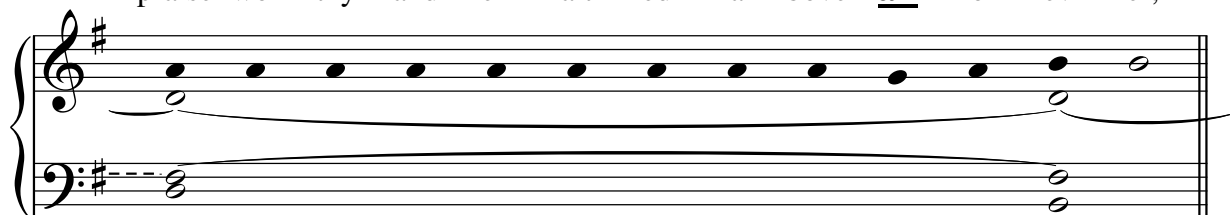
<http://www.corpuschristiwatershed.org/>



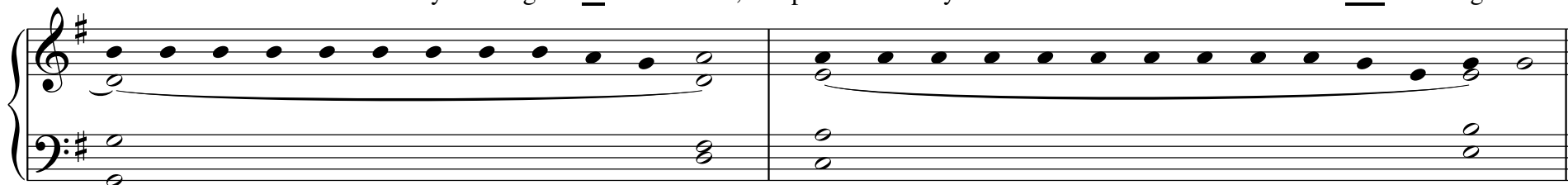
Bles - sēd are You, O Lord, the God of our fa - thers,



praise - wor - thy and ex - alt - ed a - bove all for - ev - er,

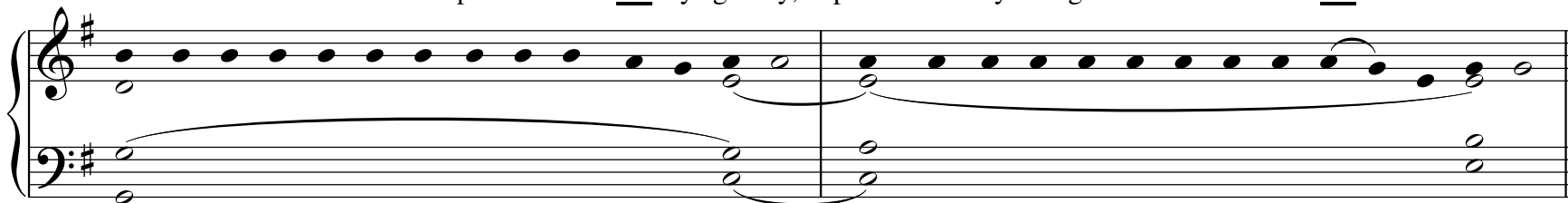


and bles - sēd is Your ho - ly and glo - ri - ous Name, praise - wor - thy and ex - alt - ed a - bove all for all ag - es.



Bles-söd are You in the tem-ple of Your **ho**-ly glo-ry, praise-wor-thy and glo-ri-ous a-bove **all**— for-ev-er.

2



Musical notation for section 2, featuring a treble and bass clef with a key signature of one sharp (F#). The melody is written in the treble clef, and the accompaniment is in the bass clef. The piece consists of two measures, with a repeat sign at the end.

Bles-söd are You on the throne **of** Your king-dom, praise-wor-thy and ex-alt-ed a-bove **all**— for-ev-er.

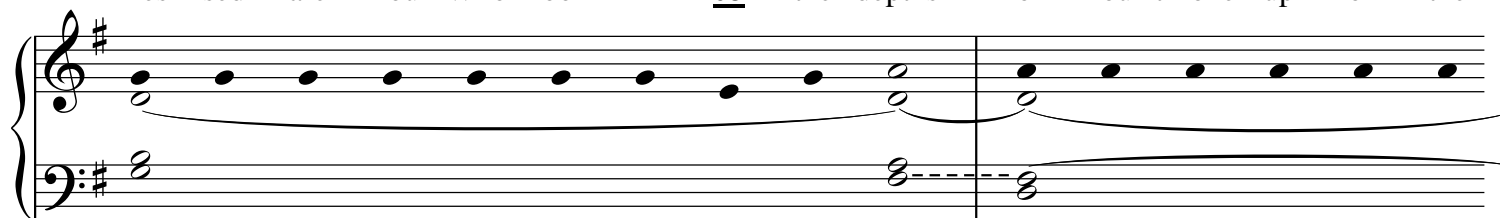
3



Musical notation for section 3, featuring a treble and bass clef with a key signature of one sharp (F#). The melody is written in the treble clef, and the accompaniment is in the bass clef. The piece consists of two measures, with a repeat sign at the end.

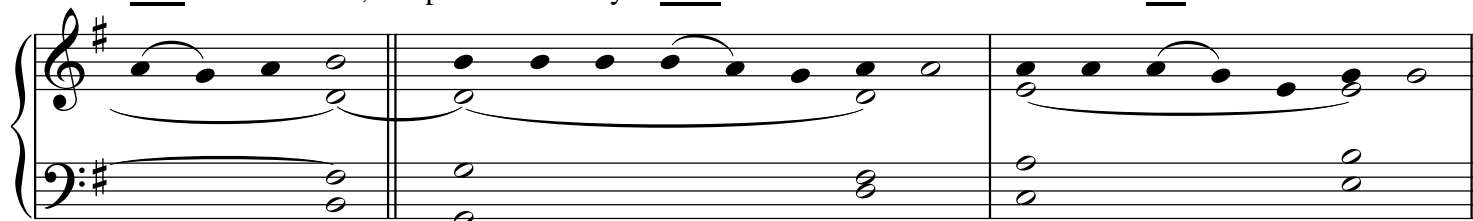
Bles - söd are You Who look in - **to** the depths from Your throne up - on the

4



Musical notation for section 4, featuring a treble and bass clef with a key signature of one sharp (F#). The melody is written in the treble clef, and the accompaniment is in the bass clef. The piece consists of two measures, with a repeat sign at the end.

che - ru - bim, praise-wor - thy **and**— ex - alt - ed a - bove **all**— for - ev - er.



Musical notation for section 4 continuation, featuring a treble and bass clef with a key signature of one sharp (F#). The melody is written in the treble clef, and the accompaniment is in the bass clef. The piece consists of three measures, with a repeat sign at the end.